

# Digital Health and Care Wales



**DIGITAL, DATA, TECHNOLOGY AND COLLABORATION**

Delivering a single health and care record for Wales

Ifan Evans, Director of Digital Strategy

Integrating Digital Health and Care

13 May 2022

# Wales – a devolved, diverse nation



\*approx a third of this number are over 75yrs



Diverse geography, with urban centres and remote rural areas - Legacy of heavy industry and its impact on health and the economy

# Digital health in Wales



Health policy devolved to Welsh Government since 1999  
Focus on well-being and integrated health and social care supported by digital services



A Healthier Wales long term plan for health and social care aims to achieve, through a whole system approach:

- Joined-up seamless care provision across Wales, using a single digital record.
- Help people to manage their own health and long-term illness.
- Get better at measuring what really matters to people.
- Introduce digital advances that help staff work more effectively.





## A Special Health Authority established 1 April 2021



We provide core national services that are  
key to the delivery of patient care in Wales

DHCW provides **the national  
technology and data services**  
needed by health and care  
professionals and the people of  
Wales, **helping to achieve better  
health and well-being**

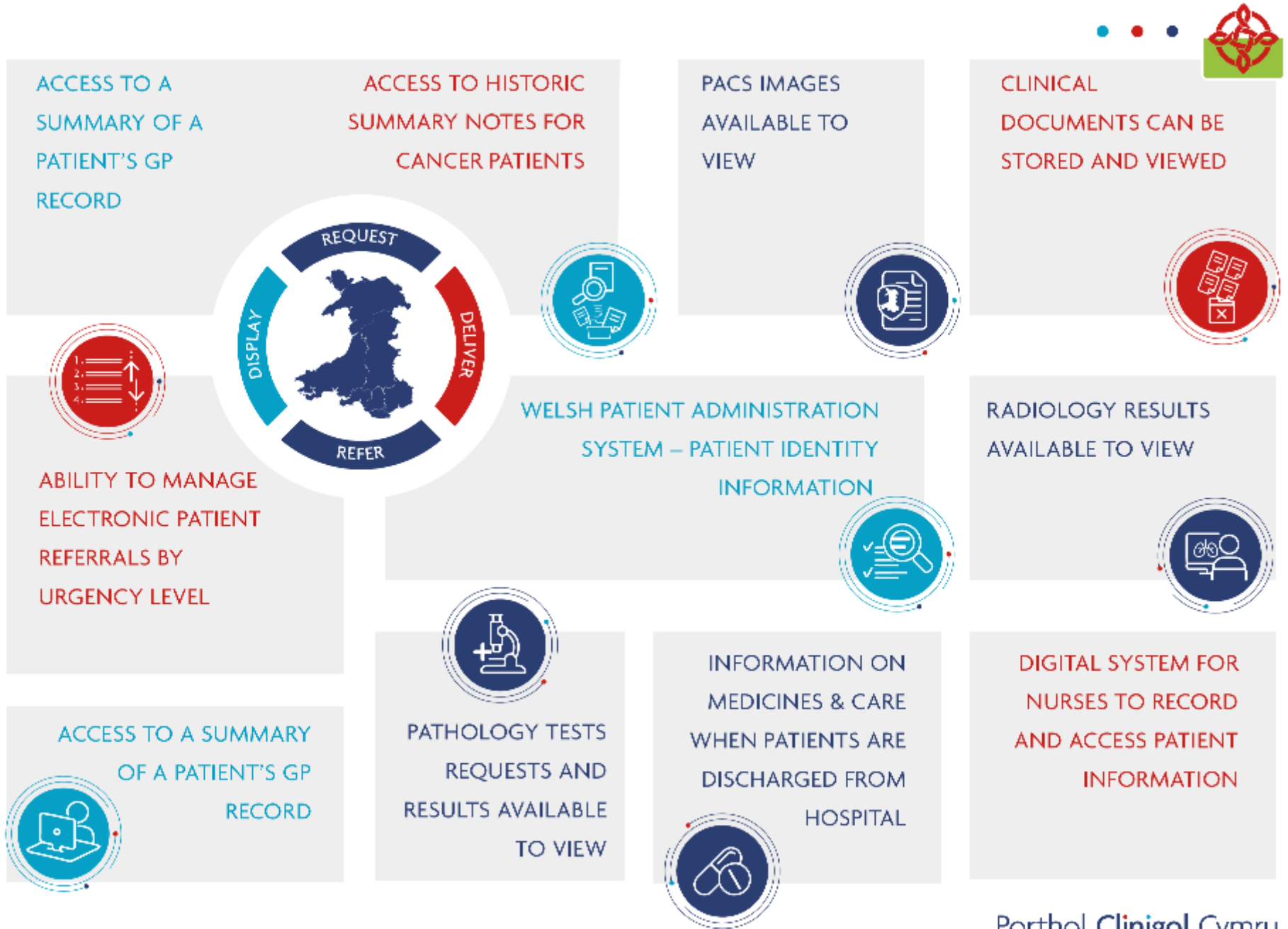
# A single health and care record for Wales

- Wales has a single national shared health and care record
- Brings together all digitised information held on every Welsh registered patient
- Patient information is available to clinicians in primary and secondary care, ambulance, air ambulance and prisons
- Consistent electronic pathology requesting across all Welsh hospitals and radiology requesting in multiple health boards
- Consistent display of diagnostic results and documents from across Wales
- A digital system for nurses to record and view patient information in hospitals now available across Wales
- Mobile app version for accessing patient information remotely and at the bedside closed beta used by 500 clinicians every month

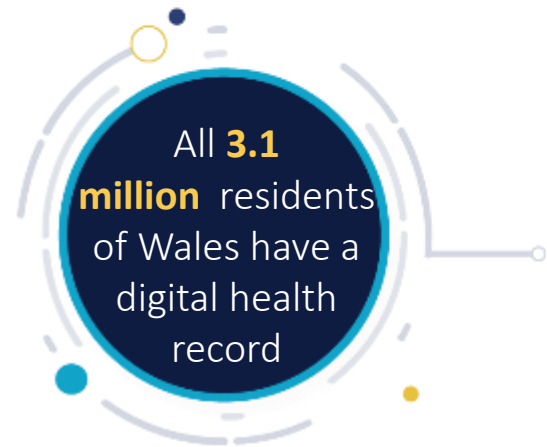
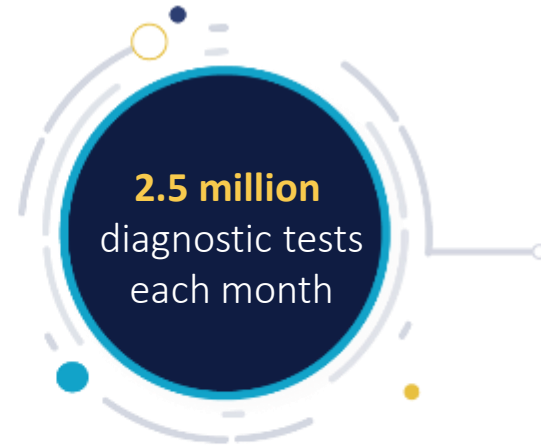


Porthol Clinigol Cymru  
Welsh Clinical Portal

the SINGLE DIGITAL HEALTH RECORD



# the SINGLE DIGITAL HEALTH RECORD for Wales



Digital Services are behind every step in the patient journey





## Using the single record clinicians can...

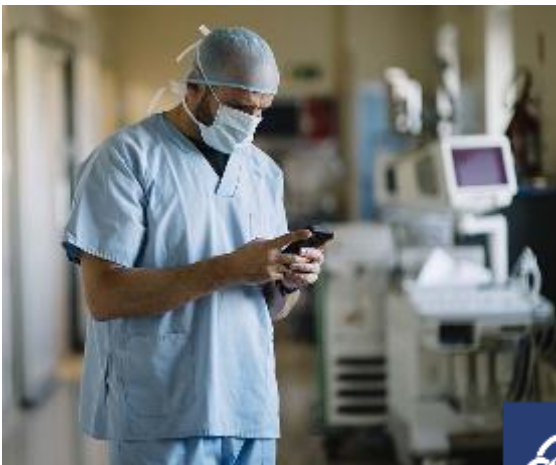
- Easily access their patient's full medical history and make more informed clinical decisions
- Collaborate with other healthcare professionals across Wales
- Keep track of patient progress more closely through digital patient 'watch lists'
- Access diagnostic test results wherever and whenever they need them
- Reduce errors and duplicate records by ensuring correct patient data is matched across systems
- Save time through more efficient digital record keeping



# Our single Record enabled our COVID-19 pandemic response



- Welsh Immunisation System created from existing digital service to schedule and record vaccinations and send out invitation letters to citizens across Wales
- COVID-19 digital test requests and reporting service set up through Welsh Clinical Portal for use in testing centres
- All-Wales digital contact tracing system developed with partners
- Creation of a digital outpatient form to record virtual hospital appointments in the single health record system
- Welsh Clinical Portal mobile app launched for clinicians to access the single health record system on the go
- Secure, authenticated COVID-19 antibody recording application developed within single health record system
- All-Wales National Anti-Viral Service



# Next Steps and Priorities



EXTENDING THE SINGLE RECORD

**The National Data Resource** – consolidated data platform, hosted in cloud, all-Wales data products based on international standards, enhancing the data behind the single record.

**Digital Medicines Transformation** - integrated portfolio across all settings, with patient access, and a shared medicines record.

**National Emergency Department System** – one system across all of unscheduled care, extending single record, rembedded real time SNOMED-CT coding. Integration with Welsh Ambulance ePCR system.

**National Intensive Care System** - one system across every ICU in Wales, extending single record.

Commitment to **open architecture built on standards for interoperability** – enabling safe and secure sharing of information, including cross-border



# Working with patients, professionals and partners



**NHS Wales App** to provide patient access to health records

**Focus on user research, user design, and user feedback** to improve our products and services

**Aligning digital to health and care service models** to drive transformation and support new ways of working

**Working in partnership with key suppliers** to create world class digital services for Wales

**Creating platforms for innovation,** working with NHS Wales and with university and industry partners





GIG  
CYMRU  
NHS  
WALES

Iechyd a Gofal  
Digidol Cymru  
Digital Health  
and Care Wales

Diolch  
Thank you

