



JIGSO³ Project

Tony Bracey
Welsh Government

Tony.bracey001@gov.wales
@Tony_Bracey

Trusted data powers successful digital services



Cabinet Office



Office for National Statistics



National Audit Office



HM Revenue & Customs



Department for Transport

HM Land Registry



Llywodraeth Cymru
Welsh Government



Defence Infrastructure Organisation



Ministry of Defence



highways
england
driving forward



Emergency response



Decision-makers are unable to move as quickly as the response demands

Inaccurate or incomplete understanding of the situation

NHS

Without a
single place to gather and analyse this data,

information in spreadsheets held by disparate
organisations will be duplicated and rapidly become
outdated

LGA statement

“Crucial data must be shared with councils, so their local knowledge and expertise can ensure that track and trace activities succeed.”

“That data should include UPRNs, so councils can identify hotspots, map where the virus is prevalent and plan for action.

Using the UPRN means that councils can link data to existing systems, filling in important gaps.

We expect all new data sources from central government to include UPRNs soon but, in the interim, councils should have access to this data to help deal with the crisis.”

A local authority perspective

“Adult social care teams can accurately, quickly understand who needs care packages or other services from the council.

Eliminated the hundreds of hours our team has spent matching 28,000 records (so far).

Accelerated the process

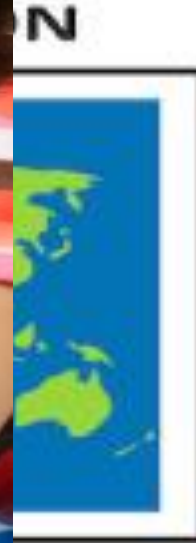
Picked up any anomalies at an earlier stage rather than trying to resolve them later.”



Llywodraeth Cymru
Welsh Government

JIGSO³ Project

So what is JIGSO³ ?

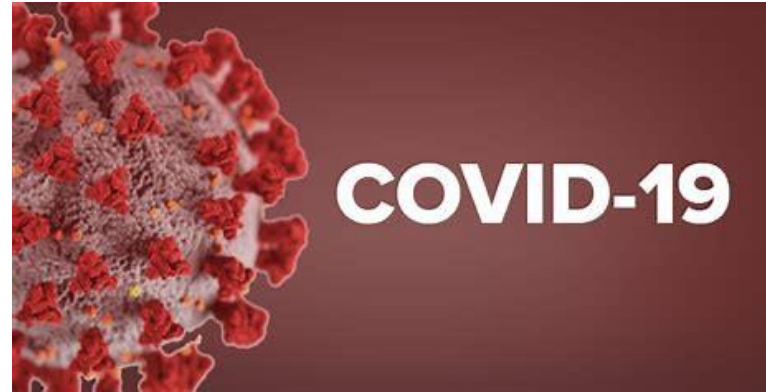




Llywodraeth Cymru
Welsh Government

JIGSO³ Project

What problem are we solving?





Llywodraeth Cymru
Welsh Government

JIGSO³ Project

How is JIGSO³ Different?





Llywodraeth Cymru
Welsh Government

JIGSO³ Project

How is JIGSO³ Different?

This is a typical data transfer file.....

	A	B	C	D	E	F	G	H	I	J	K	L	M	N	O
1	10002141036	Y													
2	10002141539	Y													
3	10002141544	Y													
4	10002141703	Y													
5	10002142367	Y													
6	10002142371	Y													
7	10002142474	Y													
8	10002142489	Y													
9	10002142516	Y													
10	10002142536	Y													
11	10002142580	Y													
12	10002142638	Y													
13	10002142691	Y													
14	10002142825	Y													
15	10002142827	Y													
16	10002142959	Y													
17	10002142963	Y													
18	10002143184	Y													
19	10002143222	Y													
20	10002143231	Y													
21	10002143382	Y													
22	10002143414	Y													
23	10002143478	Y													
24	10002143501	Y													
25	10002143548	Y													
26	10002143594	Y													
27	10002143662	Y													
28	10002143662	Y													
29	10002143695	Y													
30	10002143698	Y													

EXAMPLE

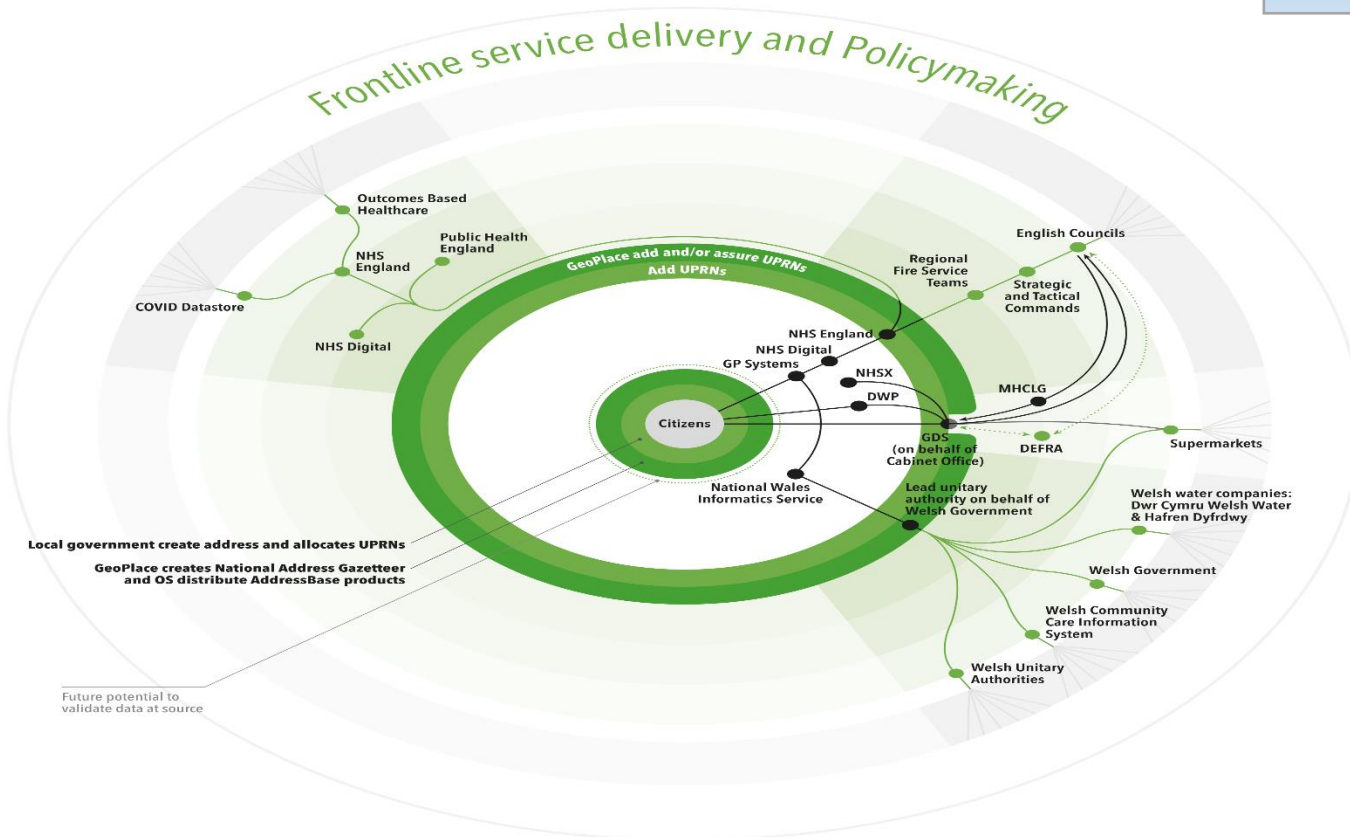




Llywodraeth Cymru
Welsh Government

JIGSO³ Project

Example of JIGSO³ concept



EXAMPLE

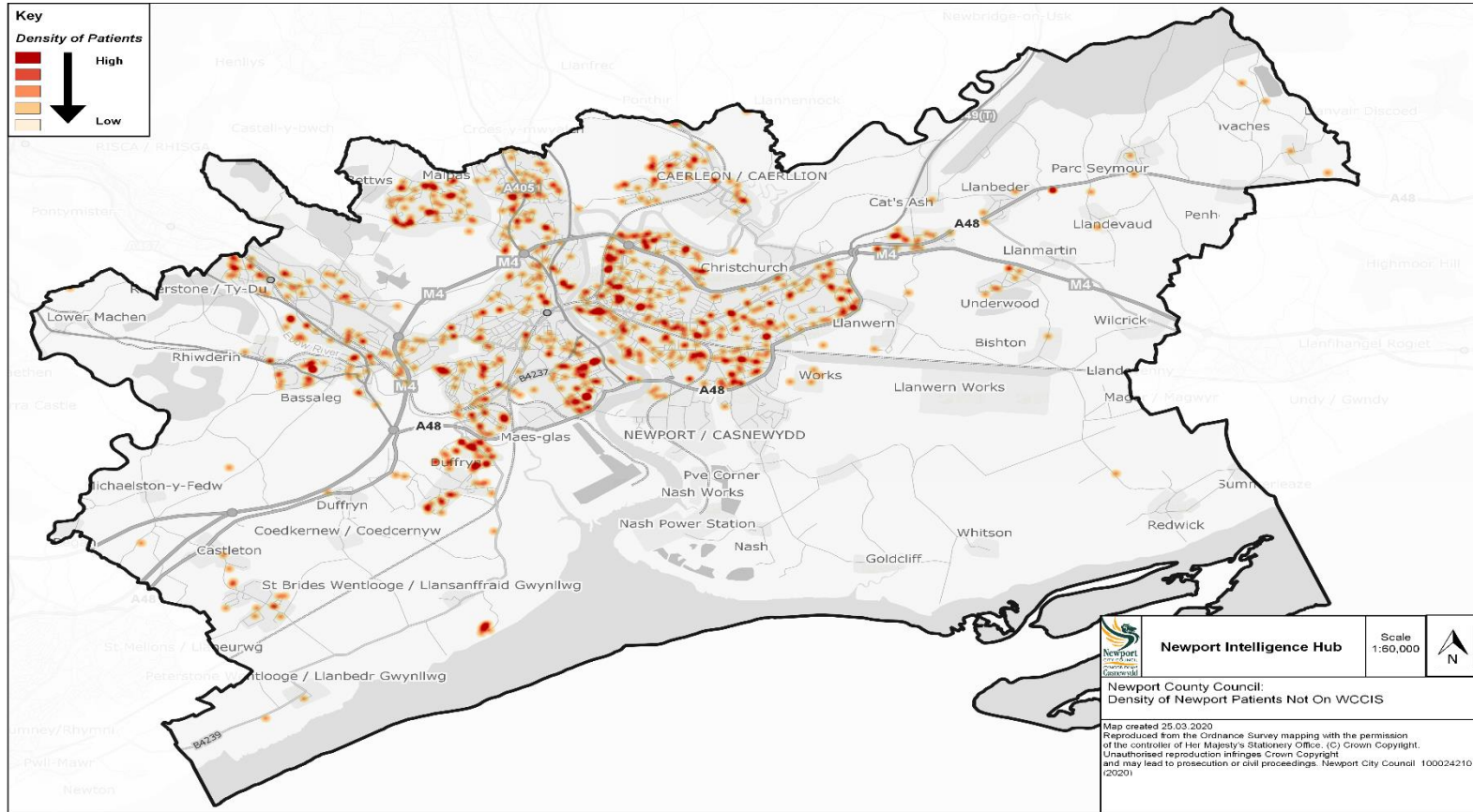




Llywodraeth Cymru
Welsh Government

JIGSO³ Project

Example of JIGSO³ concept



EXAMPLE

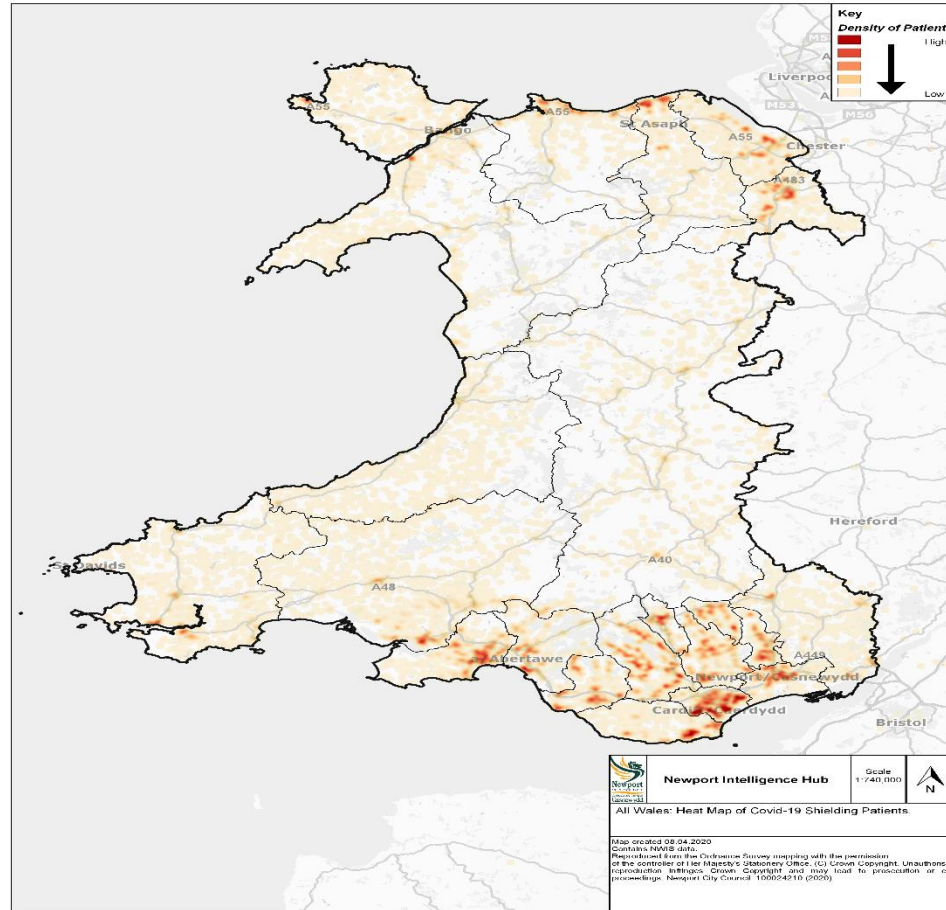




Llywodraeth Cymru
Welsh Government

JIGSO³ Project

Example of JIGSO³ concept



EXAMPLE





Llywodraeth Cymru
Welsh Government

JIGSO³ Project

Example of JIGSO³ concept

Flood map overlays

ALPHA You're viewing a new version of lle.gov.wales. [Give feedback](#) [Go to current site](#)

Llywodraeth Cymru
Welsh Government **DataMapWales** Cymraeg [jigso_admin](#)

Home > [JIGSO Test Map](#) > Edit map

Search by location name

JIGSO Test Map

Filter layers

- Default
- GP Surgeries 100%
- Care Homes (Newport) 100%
- Flood Map: Flood Zone 50%

Scale: 1:18056 Coordinates: Lat: 51° 34' 52.24" Lng: -002° 58' 39.19" CRS: WGS 84

EXAMPLE





Llywodraeth Cymru
Welsh Government

JIGSO³ Project

Example of JIGSO³ concept

Care Homes

ALPHA You're viewing a new version of lle.gov.wales [Give feedback](#) [Go to current site](#)

Llywodraeth Cymru Welsh Government **DataMapWales** Cymraeg [jigso_admin](#)

Home > JIGSO Test Map > Edit map

JIGSO Test Map

Filter layers

- Default
- Care Homes (Newport)

Catalog

text to search...

Search

- Care Homes (Newport Test Data)** +
Test data showing Care Homes in Newport.
13e2d97c-fb22-11e9-9be1-080027e28018
- GP Surgeries** +
a5b45654-fb27-11e9-9be1-080027e28018
- GP Surgeries Sub-Branches** +
af3771f8-fb27-11e9-9be1-080027e28018
- Dentist Surgeries** +
6a6c4ef0-fb28-11e9-9be1-080027e28018

Results 1-4 of 6

Scale: 1 : 288896 Coordinates: Lat: 51° 39' 16.80" Lng: -002° 22' 03.19" CRS: WGS 84

EXAMPLE





Llywodraeth Cymru
Welsh Government

JIGSO³ Project

In Summary

- Household level data **IS** effective in improving citizen outcomes;
- It's not the technology that needs to change, it's us as leaders;
- GDPR is not a 'blocker' we just need to do this right;
- Please, no more 'Regulation 28 Reports' or winters when we say JIGSO3 could have prevented that or made our response more effective;
- JIGSO3 is not perfect, but it's a step in the right direction.





Llywodraeth Cymru
Welsh Government

JIGSO³ Project

Final Thought



"Never let a good
crisis go to waste."

- Winston Churchill





Llywodraeth Cymru
Welsh Government

JIGSO³ Project

Diolch / Thank You

And before you ask.....

google translate

ALL WORK IMAGES VIDEOS MAPS NEWS SHOPPING

2,020,000 Results Date Language Region

English (detected) Welsh

JIGSAW Jig - so

6/3000

Other ways to say **jigsaw**
NOUN
jig - so jigsaw, puzzle

Data from: [Microsoft Translator](#)

