

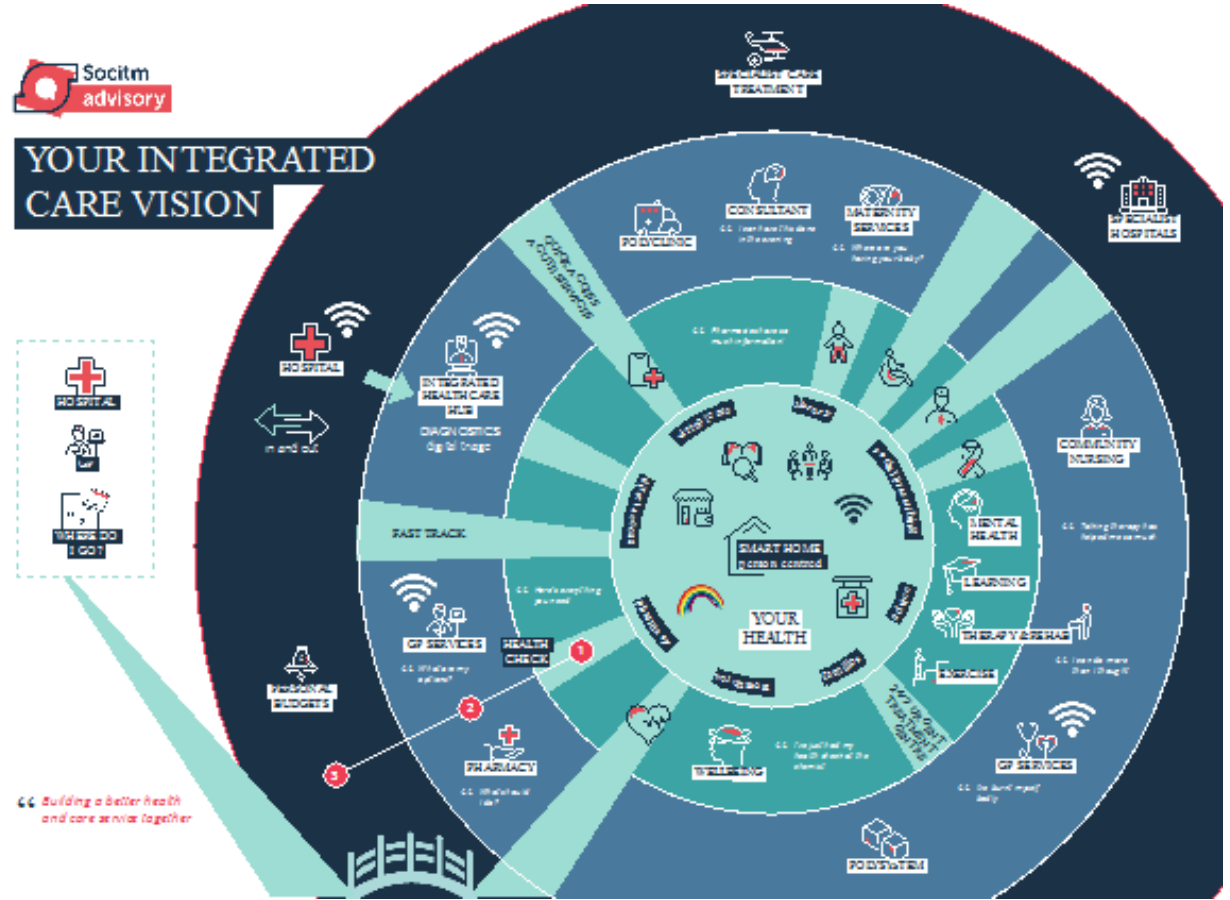


UK Authority Health & Social Care 2021

Challenges of integrating Social Care with Health

Russ Charlesworth
Practice Director

May 2021





“Integration will improve outcomes for citizens at a place level”

- Do we have the right funding structures and levels?
- Does the sector have capacity & capabilities to change?
- Is change already happening? If so, how do we best support scaling?





Funding

- Current Agenda and Structure
- Direction of travel – National Policy & Regional Delivery
- Funding Models including incentives
- Change - Transformation or Transition?
- Key influences over next 5 years





Capability & Capacity

- Industry Structure
- Leadership
- Professional practice
- Workforce
- Infrastructure
- Standards

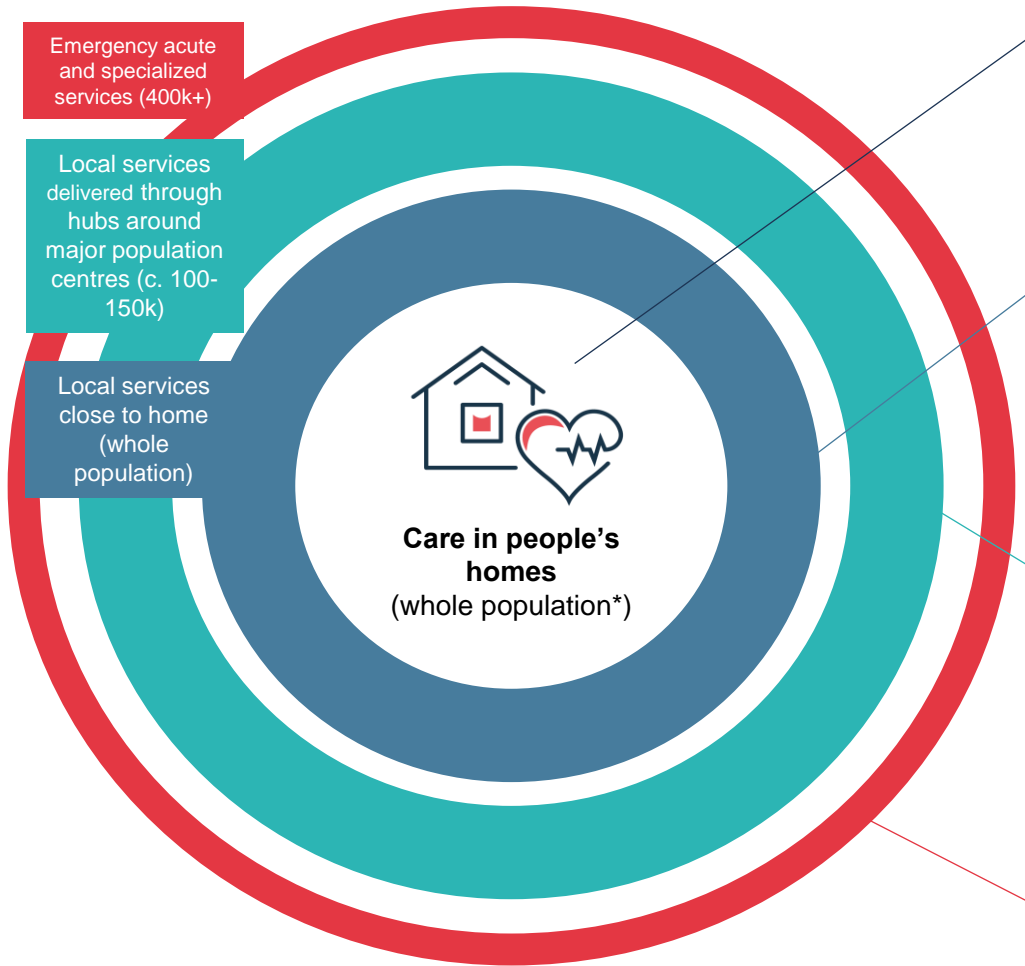





Role of Data

- Evidence support for change?
- Aligned to industry re-orientation?
- Covid lessons learned?
- My data or Your data or Our data?
- Information, Insight, Intervention, Change








The "Foundation"

A foundation of existing new services provided within people's homes 

Local care at neighbourhood level

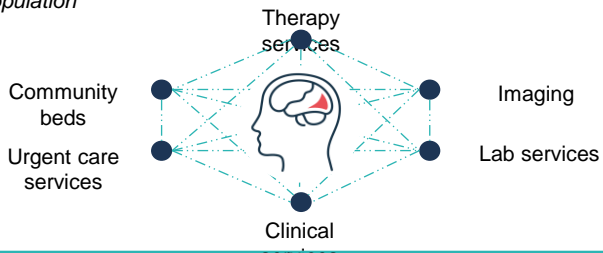
GP assesses needs of the person through risk stratification  

A joined-up care model, patients are actively managed within primary care and a multi-specialty team offers the right support based on the needs of the person 

Place based care – joined-up care teams working from the same place and in the same geographical areas

Integrated Care hubs

Some services will benefit from co-location in a physical space. These services will be flexed according to the needs of the local population



Integrated Care facilities providing a range of health and social care services:
Therapy Services;
Diagnostics;
Urgent care services;
Mental Health services;
Community beds

Delivered in defined centralised locations

Specialist services will be delivered to a population size of 400,000+

Emergency acute care and specialist services Planned care and complex diagnostics Specialist mental health

Emergency acute care;
Specialist acute services;
Planned care;
Complex diagnostics;
Specialist mental health

