

# Greater Manchester Regional Approach to Integrating Digital Health & Social Care

Jon Burt – Lead Enterprise Architect, Greater Manchester Combined Authority

# DOING DIGITAL DIFFERENTLY IN GREATER MANCHESTER

**Big enough to matter, small enough to know each other, and driven enough to make things happen...**

<https://www.greatermanchester-ca.gov.uk/what-we-do/digital/>

# THIS IS THE DIGITAL PLACE

Here we set out the next chapter in our ambition to be recognised as a world-leading digital city region, with an ongoing commitment to taking an open, innovative and connective approach to delivering that ambition.

We remain committed to being a digital city-region with a difference. By putting people at the heart of our plans we aim for a more inclusive approach that builds on our greatest asset.



**ANDY BURNHAM**

Mayor of Greater Manchester



**CLLR BEV CRAIG**

Leader of Manchester City Council

GMCA Lead for Education Skills, Work, Apprenticeships and Digital



**LOU CORDWELL**

Founder and CEO, MagneticNorth

Co - Chair, Greater Manchester Local Enterprise Partnership (LEP)

LEP Digital Lead



**TOM STANNARD**

CEO of Salford City Council

GMCA Lead for Education Skills, Work, Apprenticeships and Digital

# A Pioneering Powerhouse Accelerating Investment



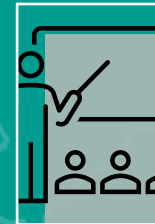
2.9m people  
+240,000 since 2000



118,720 businesses



1.4m working in GM  
+100,000 over next 10 years



Over 100,000 higher education students at 5 institutions

## Gross Value Added

**GM**  
ECONOMY 2015  
**£59.6bn**

**BIGGER THAN**

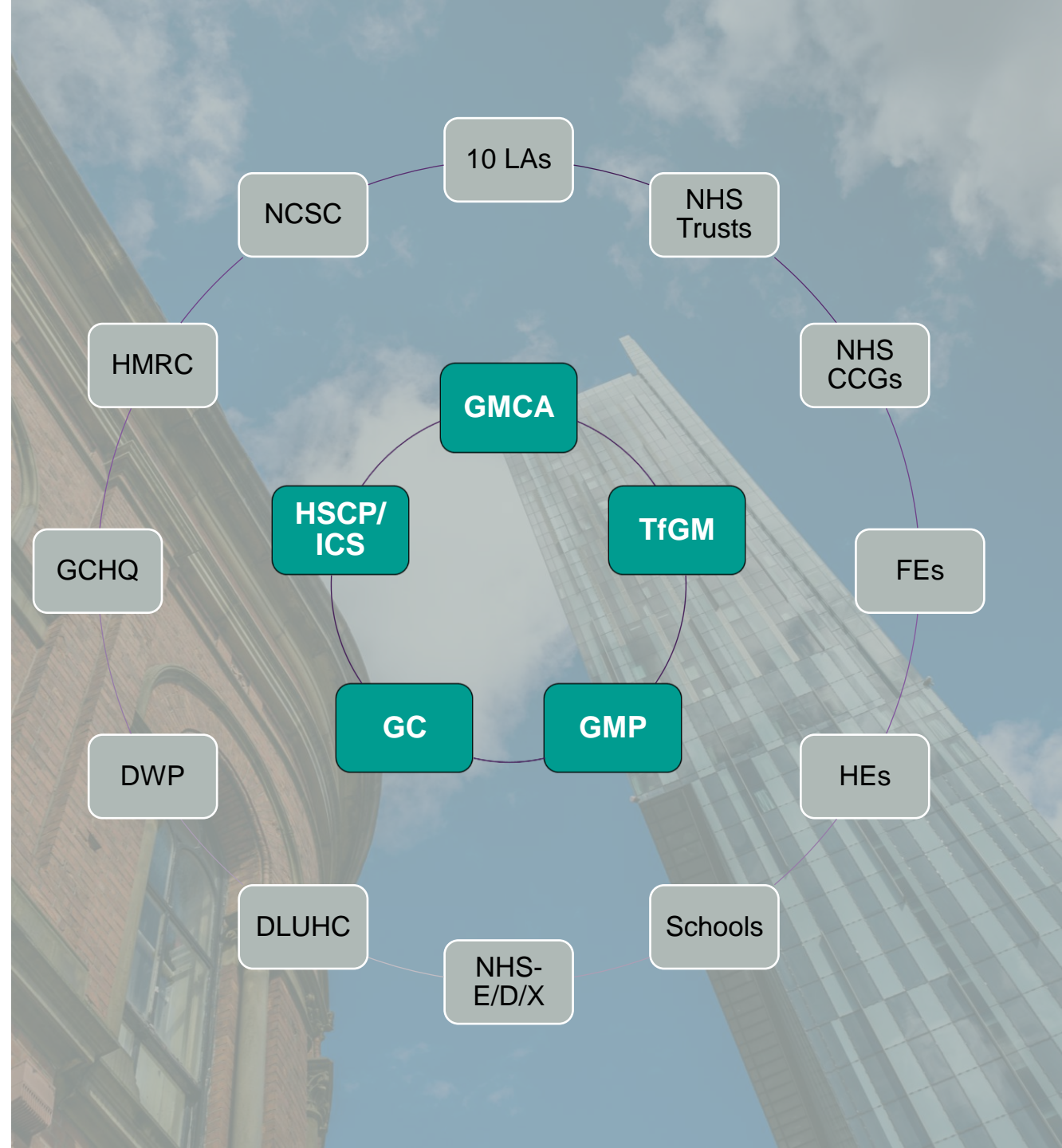
**WALES**  
ECONOMY 2015  
**£55.8bn**

**NORTH EAST**  
ECONOMY 2015  
**£49.7bn**

**NORTHERN IRELAND**  
ECONOMY 2015  
**£34.4bn**

# Our Landscape

Cross Greater Manchester organisations working with localities and national organisations to deliver digital and transformational change to improve the lives of GM Citizens





# Greater Manchester Digital Blueprint

## DIGITAL PRIORITIES

**1**

Empowering  
People.



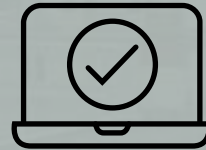
**2**

Enabling  
innovative  
public  
services.



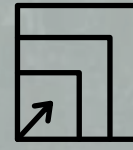
**3**

Digitally  
enabling all  
businesses.



**4**

Creating  
and scaling  
digital  
businesses.



**5**

Being a  
global digital  
influencer.



## ENABLERS

**A**

Strengthening our digital talent pipeline.

**B**

Extending our world class digital infrastructure.

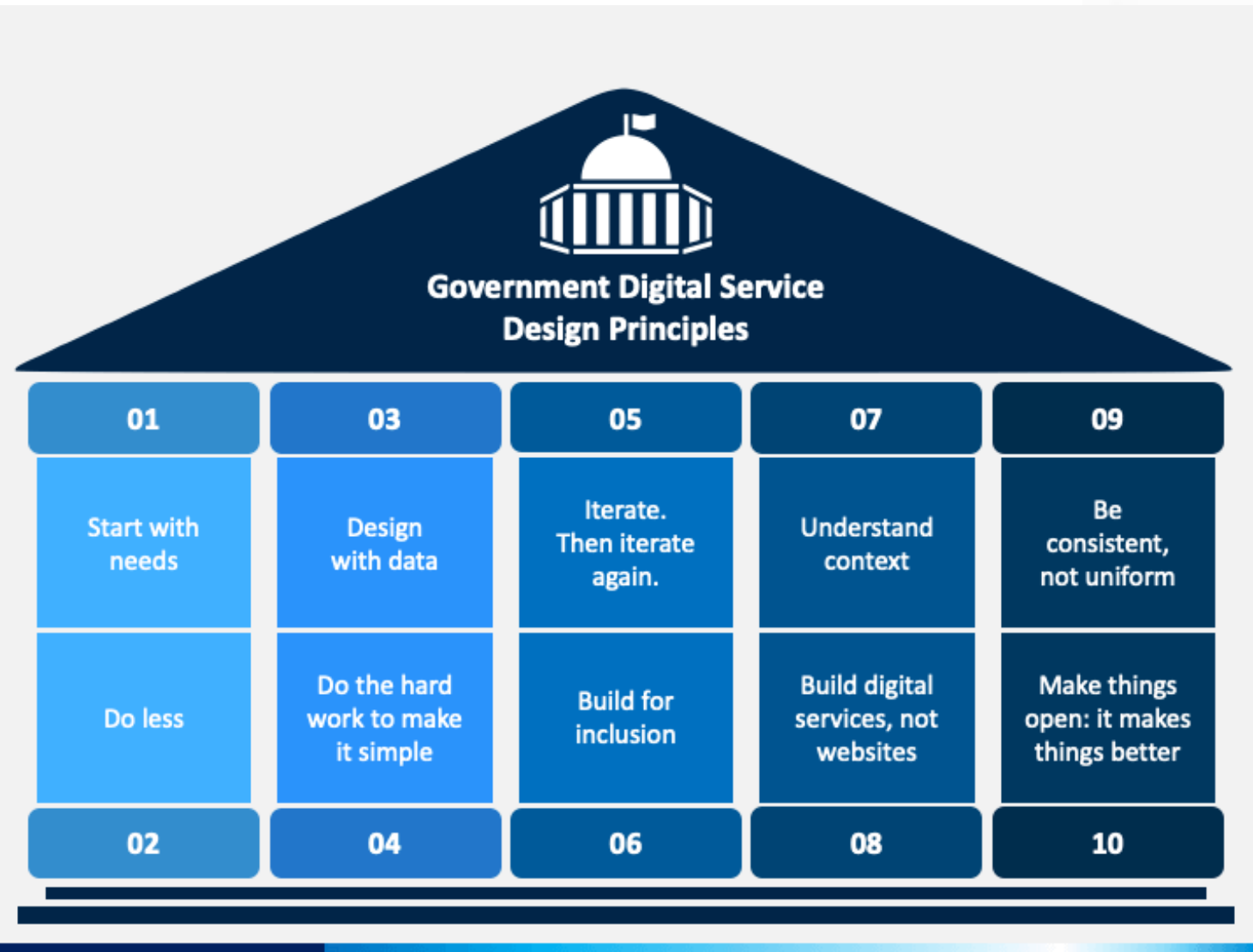
# Our Design Thinking Inspirations



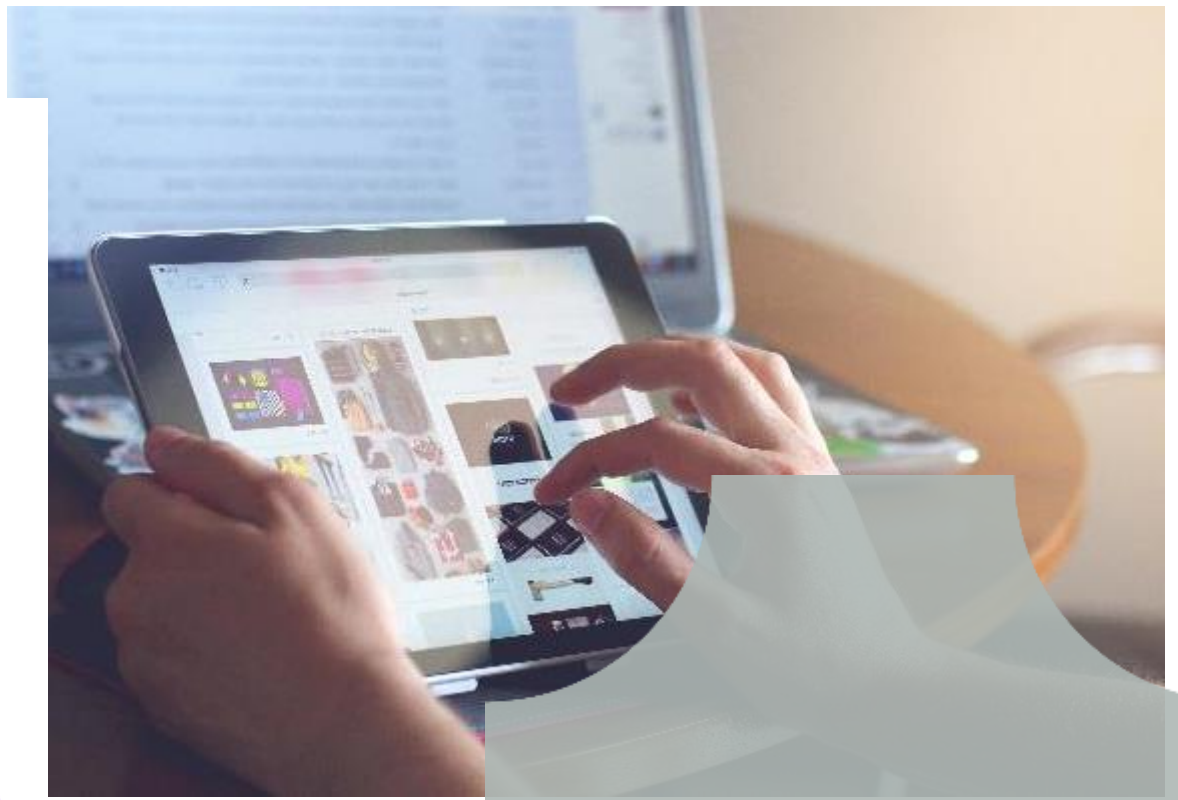
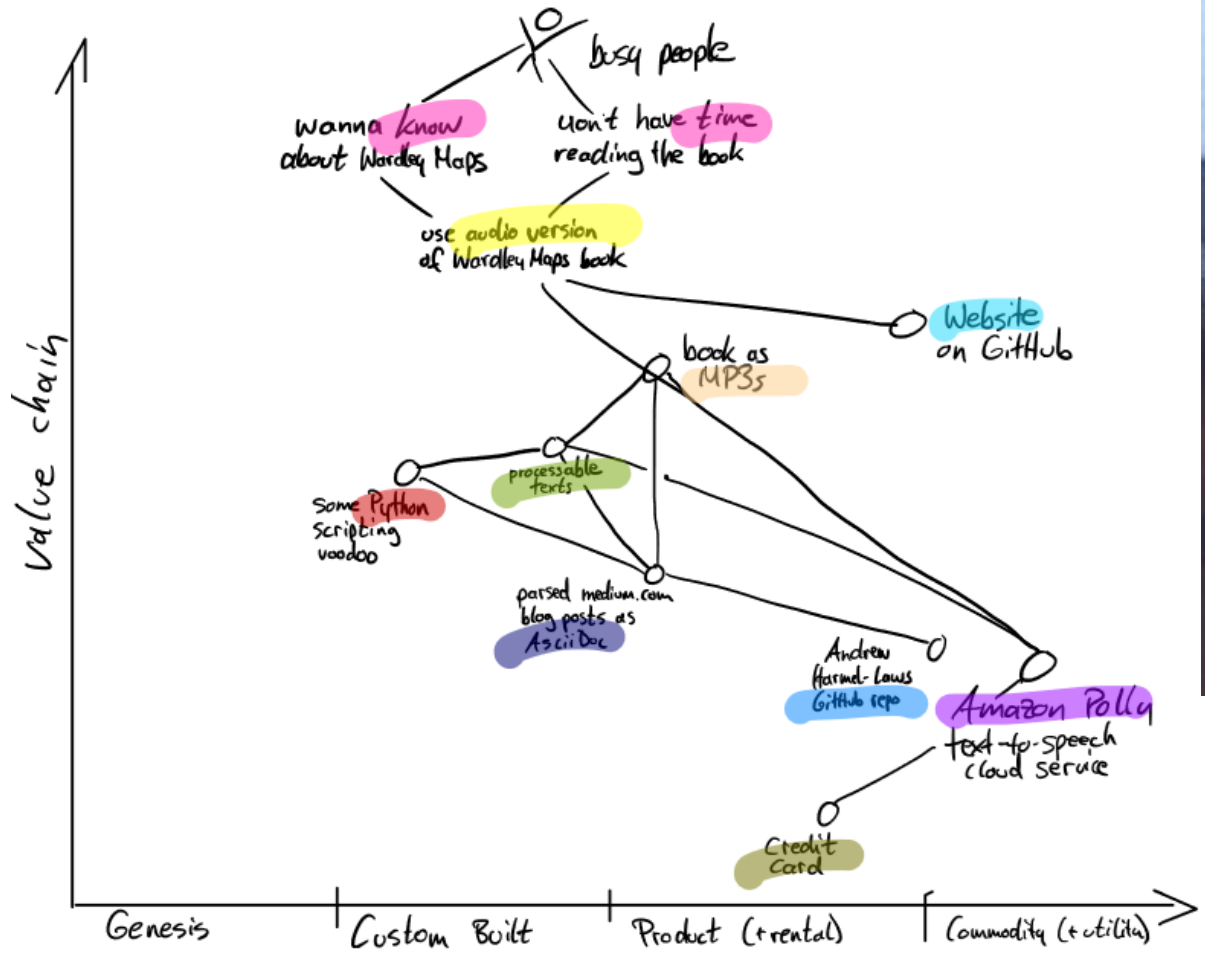
**To steal ideas from  
one person is  
plagiarism; to steal  
from many is  
research**



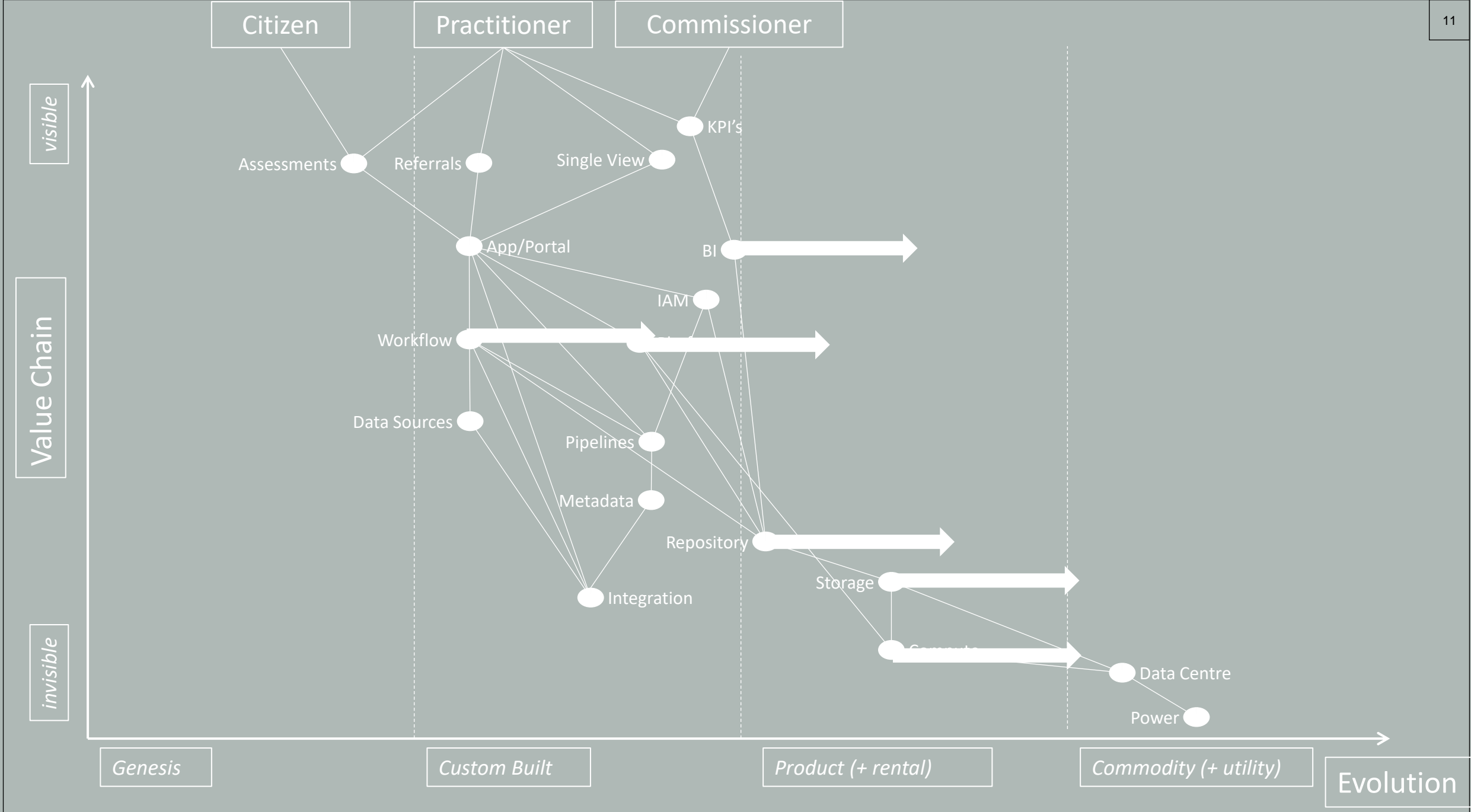
# GDS Design Principals



# Wardley Mapping



<https://learnwardleymapping.com/>



Citizen

Practitioner

Commissioner

visible

Value Chain

invisible

Genesis

Custom Built

Product (+ rental)

Commodity (+ utility)

Evolution

Assessments

Referrals

Single View

KPI's

App/Portal

BI

IAM

Workflow

Data Sources

Pipelines

Metadata

Repository

Integration

Storage

Compute

Data Centre

Power

visible

Value Chain

invisible

Citizen

Practitioner

Commissioner

Assessments

Referrals

Single View

KPI's

App/Portal

IAM

BI

Platform

Workflow

Pipelines

Storage

Data Sources

Metadata

Repository

Compute

Data Centre

Power

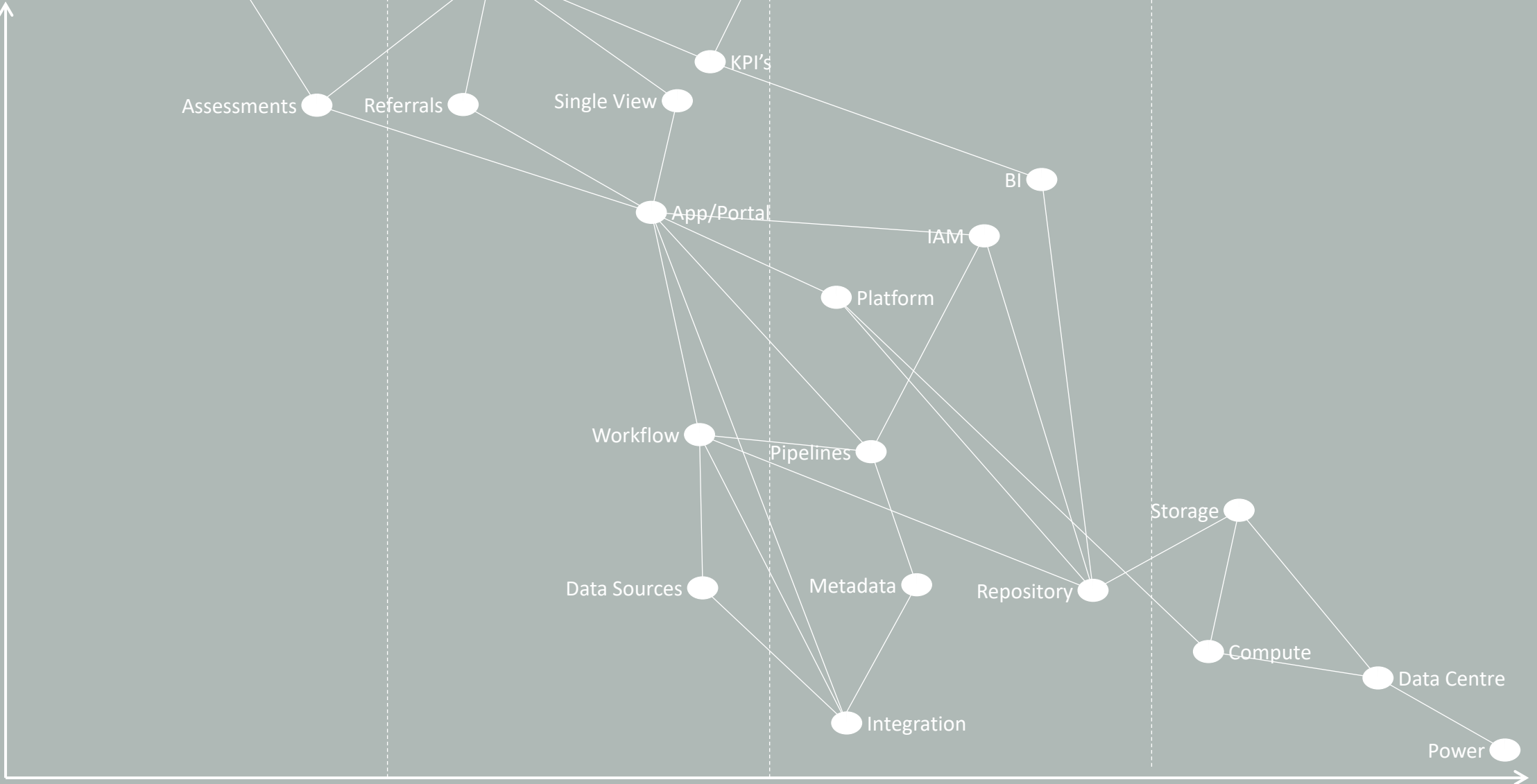
Genesis

Custom Built

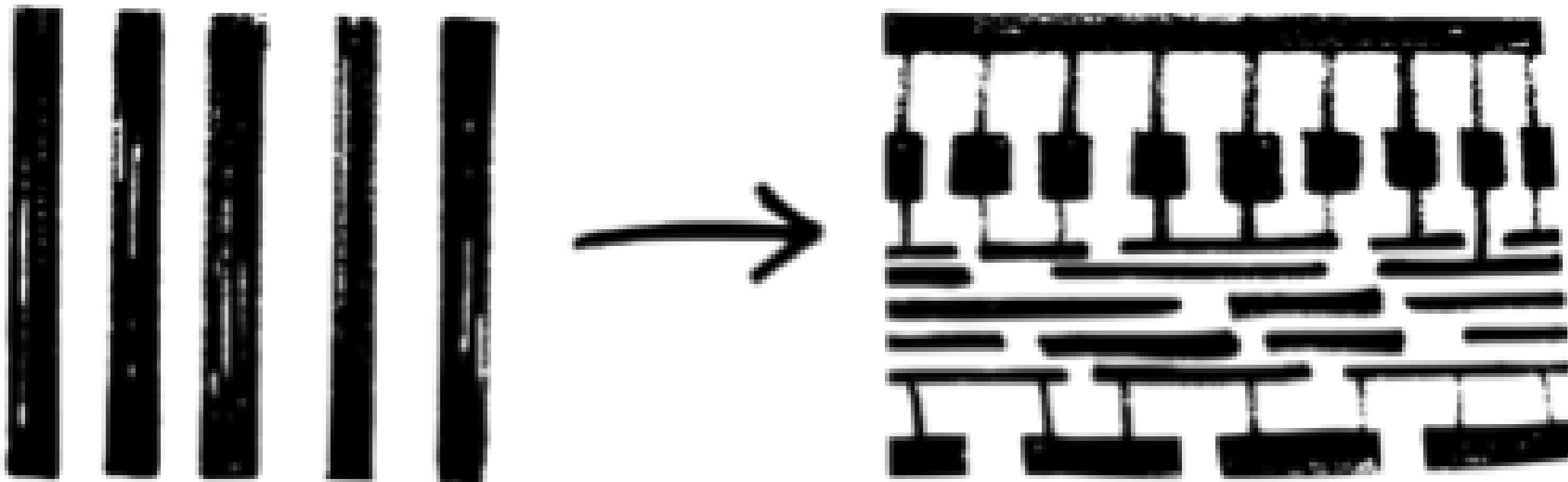
Product (+ rental)

Commodity (+ utility)

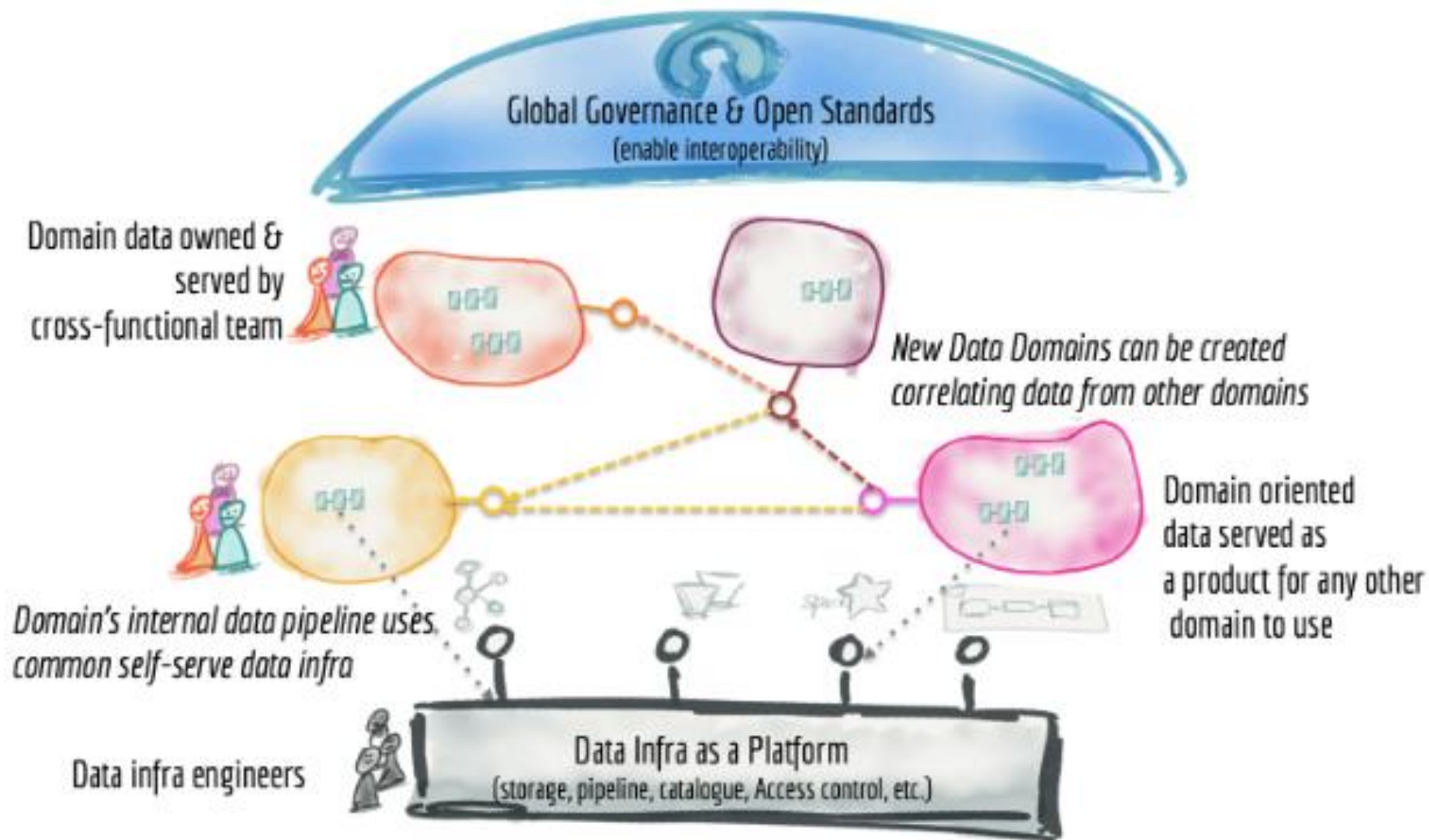
Evolution



# Mark Foden - Gubbins of Government



# Zhamak Deghani Data Mesh





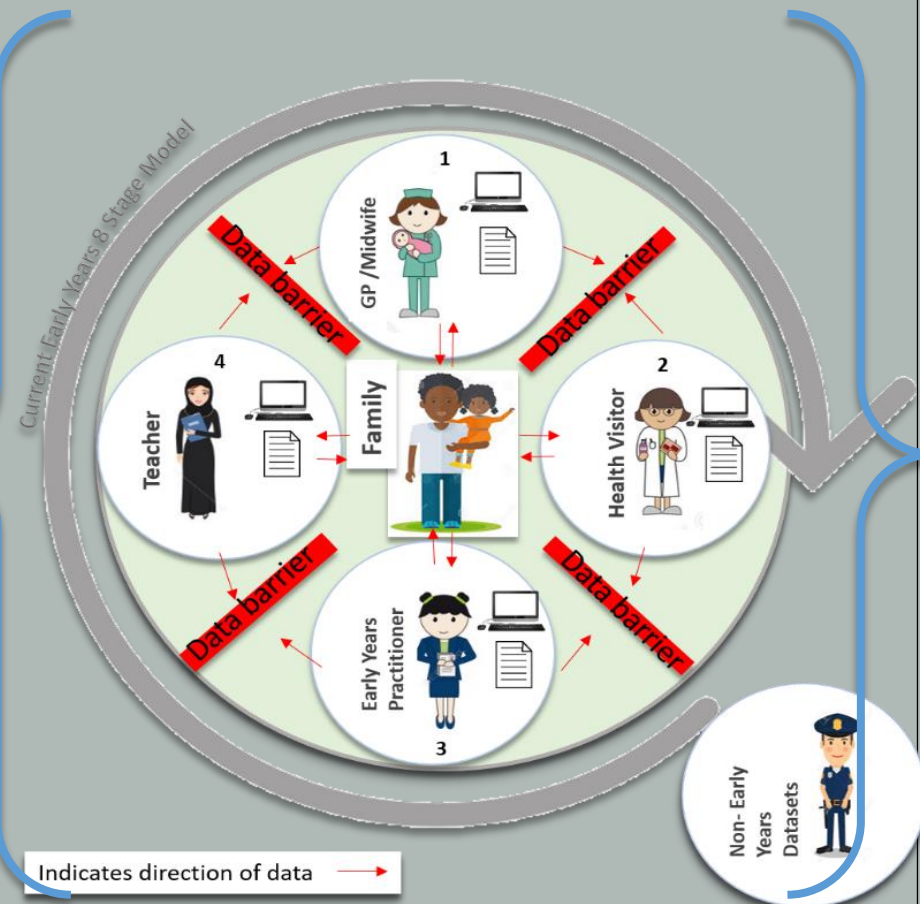
# Use Cases

Focusing on adding value to our organisations



# Early Years Digitisation

- Early Years 8 Stage Delivery Model
- School Readiness lower than national average in GM (varies across localities)
- Problems with data silos in local systems or paper assessments
- Information isn't shared consistently between professionals and cross-sector (especially moving from health into early education) and across locality boundaries
- Complexity and methods of data-sharing between localities in GM
- *Currently working with health visiting and early years settings (2 & 3)*



# Supported Families

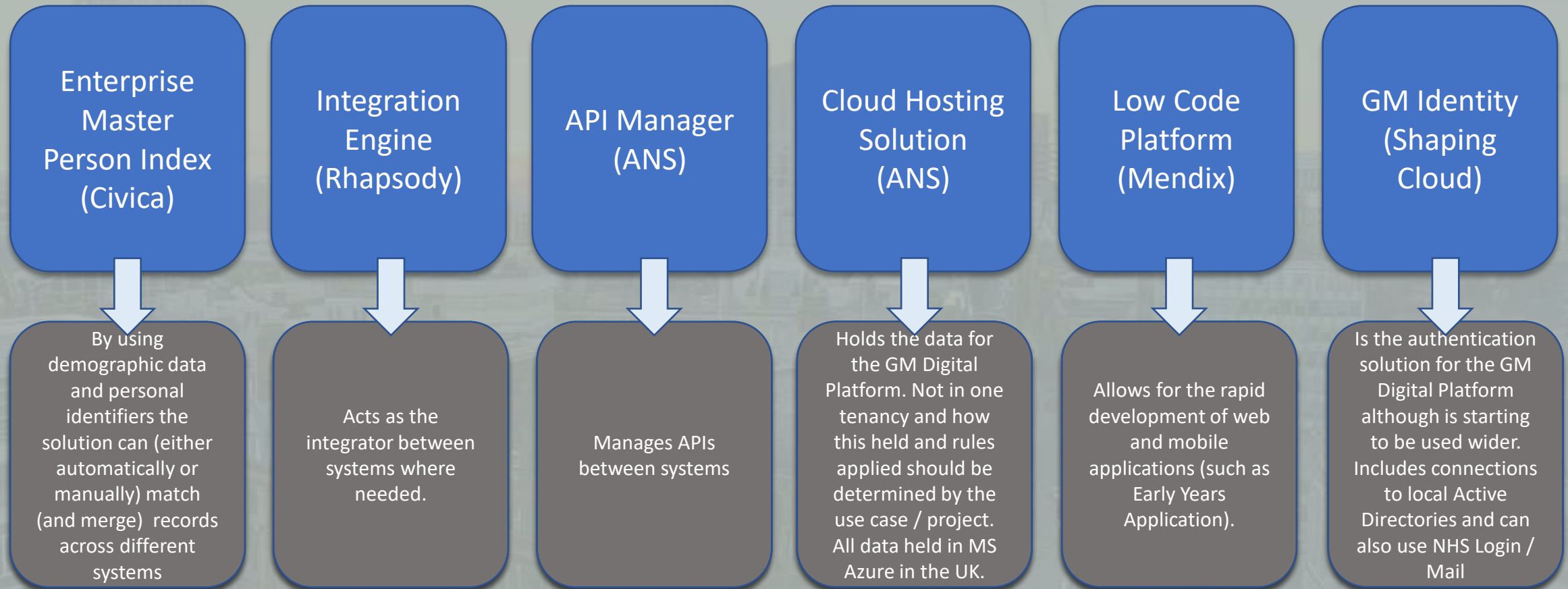
- Launched in 2012, Revamped in 2014 (Troubled Families)
- GM have supported over 50,000 families during phase 2
- Supports families experiencing multiple issues around Crime, Attendance, Safeguarding, Finance, Domestic Abuse and Health
- Encourages the use of data, linking data across systems (including partners) to evidence eligibility, outcomes, sustained success and evaluations of impact
- Analyst spend a large amount of time, collecting, cleaning and re-formatting data to support the GM evaluation

# GM Digital Platform & Distributed Data Mesh

Re-usable component architecture



# GM Digital Platform



# Early Years Integrated Solution - Overview

New births, child deaths and families moving into and around GM

3

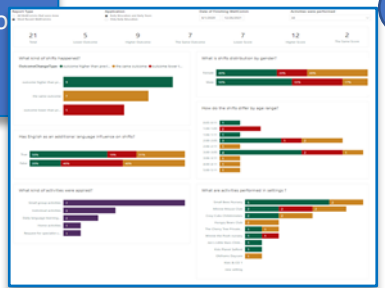
National Event Management Service

data

1. Early Years Application
2. Early Education Application
3. Early Years Integration from NEMS
4. Early Years Integration into local systems
5. Data Platform

- Early Years Application Roles:
- Parent / Carer
  - Health Visiting Role
  - Health Visitor Manager Role
  - Team Administrator Role

- A Data Platform that allows for the surfacing of data within the Application using defined Power BI reports
- Facilitates a pipeline of data to localities to consume and use locally



5

1

Parent / Carer

- All ASQ-3 and ASQ-SE available to be moderated (or completed) by Health Visitor role
- All WellComm Assessments available to be completed by Health Visitor role
- Completed ASQ / WellComm (minus free text fields) able to be shared with Early Years Settings / Professionals

2

- All WellComm Assessments available to be completed by Early Years Settings / Professionals
- Early Education Practitioners will be able to complete ASQ at 4b stage

data

All ASQ-3 and ASQ-SE digitised and available to be completed by parent / carer. Automated assessment creation set to universal stages 3,4 and 5

4

National Event Management Service

data



EPR / Health Systems

ASQ / WellComm scores from EY App into EPR

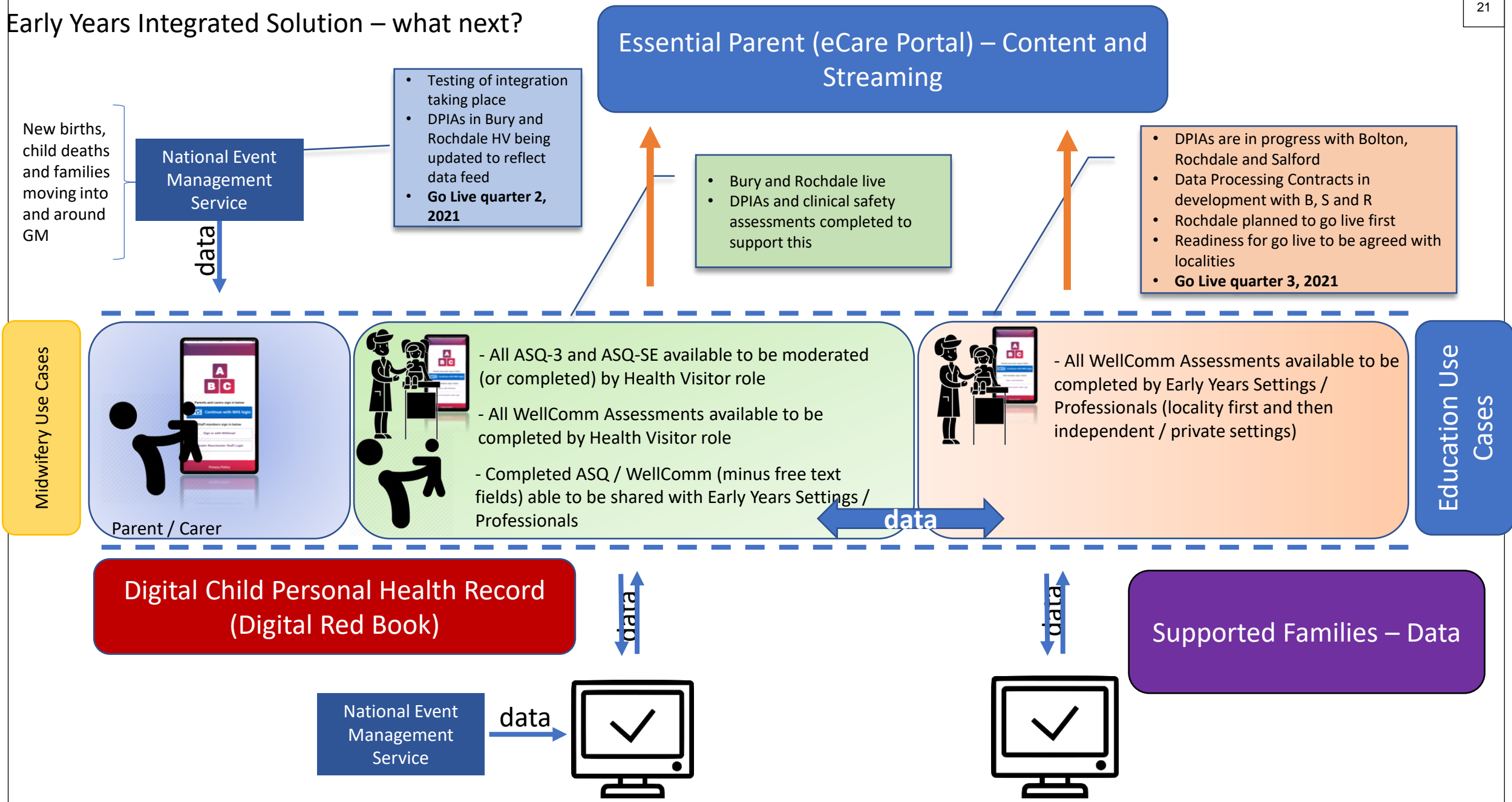
data

- Appointments to EY App from EPR
- Updated demographics to EY App from EPR

- Early Education Extension to EY Application Roles:
- Locality Business Administrator
  - Setting Administrator
  - Setting Practitioner
  - Specialist Education Practitioner (Area SENCO, Learning Support, Education Psych)
  - Early Help Practitioner



# Early Years Integrated Solution – what next?



New births, child deaths and families moving into and around GM

National Event Management Service

data

- Testing of integration taking place
- DPIAs in Bury and Rochdale HV being updated to reflect data feed
- **Go Live quarter 2, 2021**

Essential Parent (eCare Portal) – Content and Streaming

- Bury and Rochdale live
- DPIAs and clinical safety assessments completed to support this

- DPIAs are in progress with Bolton, Rochdale and Salford
- Data Processing Contracts in development with B, S and R
- Rochdale planned to go live first
- Readiness for go live to be agreed with localities
- **Go Live quarter 3, 2021**

Midwifery Use Cases

**Parent / Carer**

**Professionals**

- All ASQ-3 and ASQ-SE available to be moderated (or completed) by Health Visitor role
- All WellComm Assessments available to be completed by Health Visitor role
- Completed ASQ / WellComm (minus free text fields) able to be shared with Early Years Settings / Professionals

**Education Use Cases**

- All WellComm Assessments available to be completed by Early Years Settings / Professionals (locality first and then independent / private settings)

Education Use Cases

data

Digital Child Personal Health Record (Digital Red Book)

Supported Families – Data

National Event Management Service

data

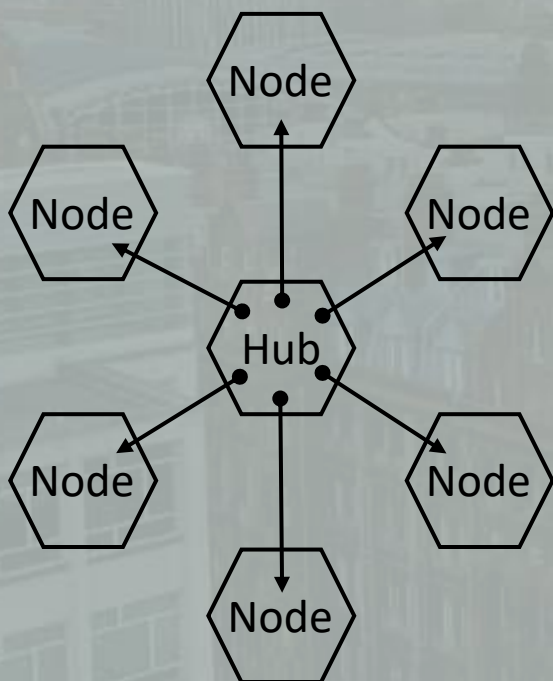


data

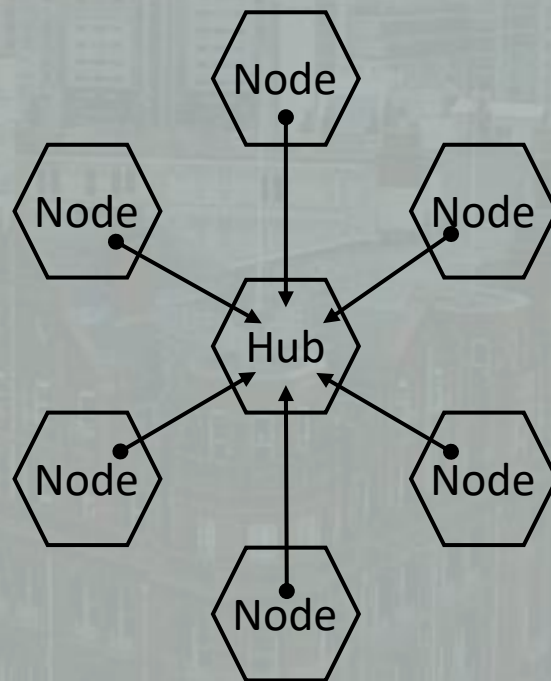
data

# GM Data Mesh

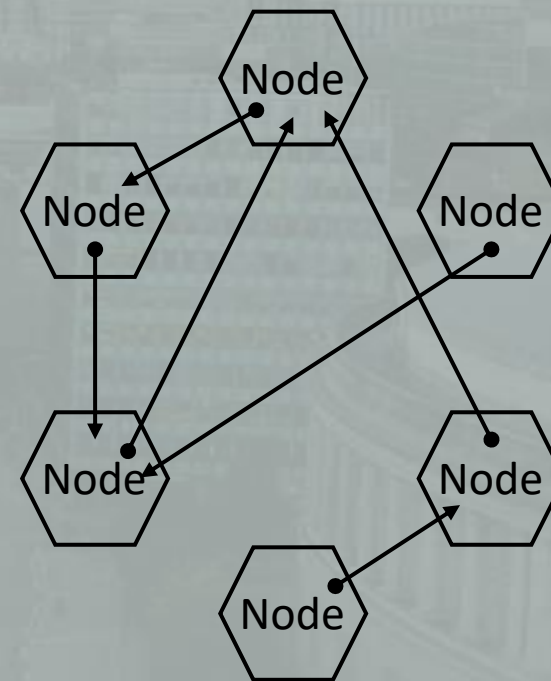
## Data Catalogue Distribution



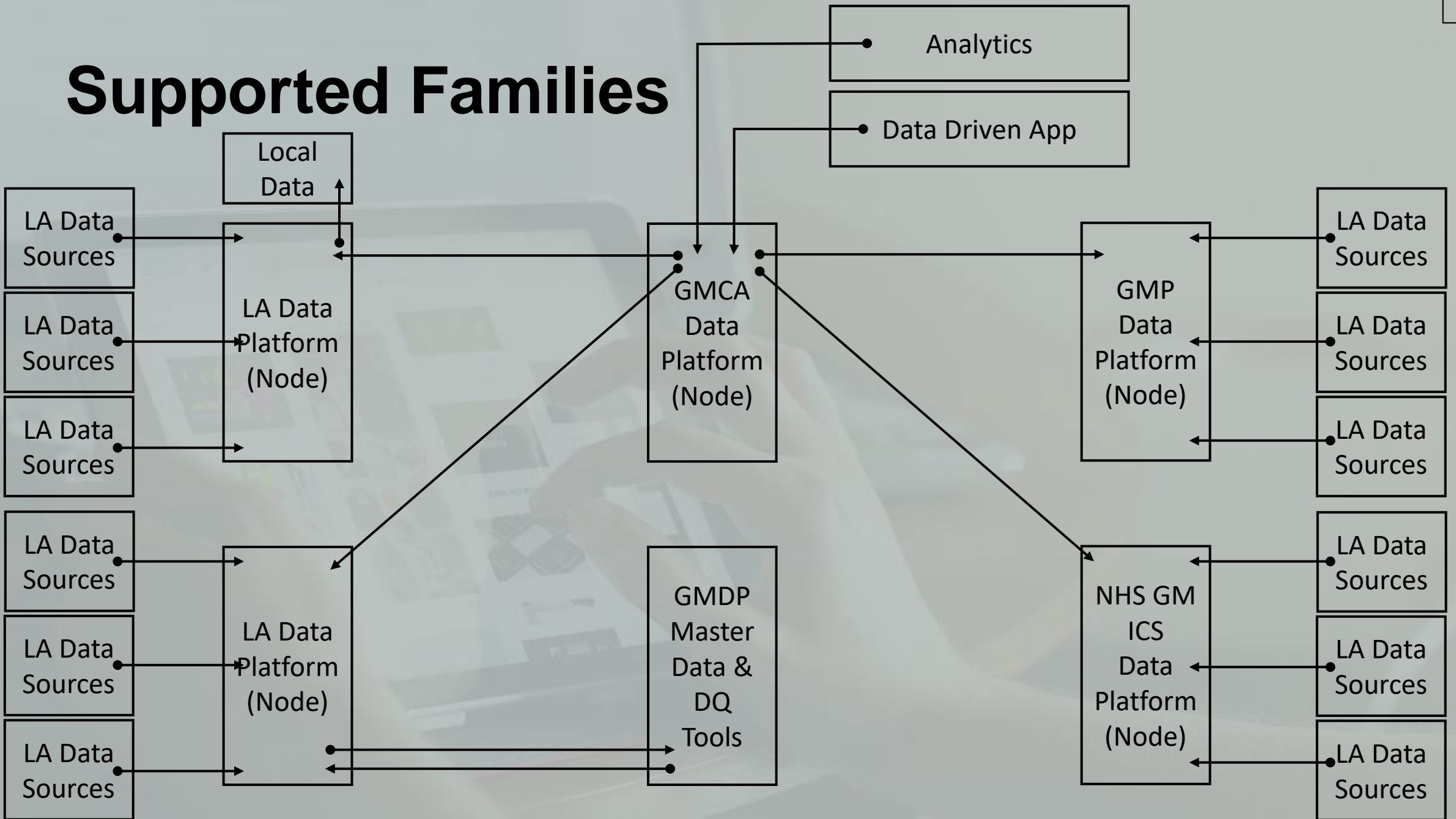
## Meta data Distribution



## Data Flow and Read Distribution



# Supported Families



# Thank you for your time



[@GMCADigital](https://twitter.com/GMCADigital)



[Greater Manchester Combined Authority](https://www.greatermanchester-ca.gov.uk)



[greatermanchester-ca.gov.uk/digital](https://greatermanchester-ca.gov.uk/digital)



[gmcadigital@greatermanchester-ca.gov.uk](mailto:gmcadigital@greatermanchester-ca.gov.uk)