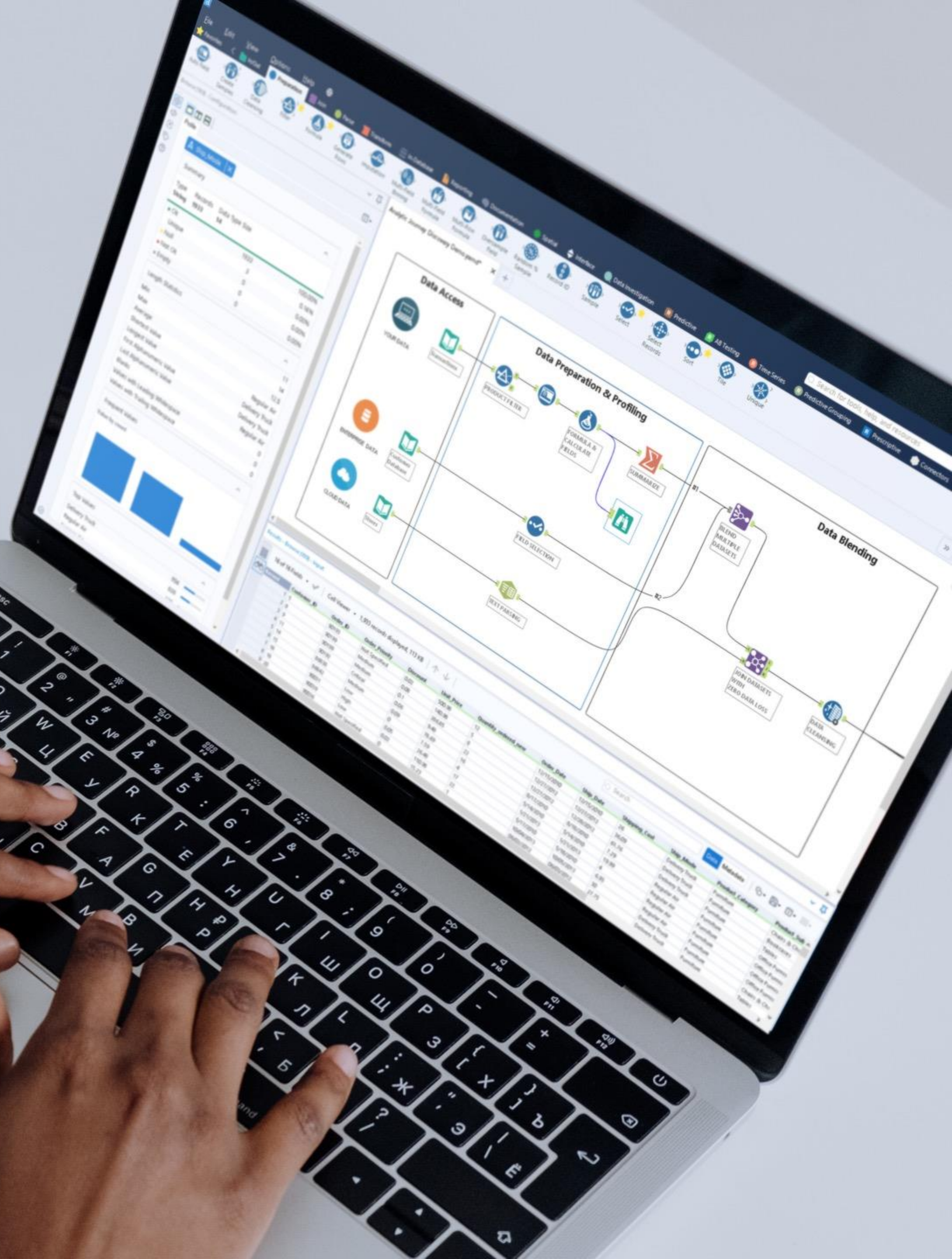


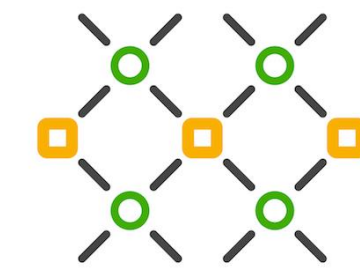
alteryx

Climate Change
Projects



Alteryx Decentralised Energy Project

Using Location Intelligence
to Place Solar Panels in
Rwanda



mesh power
rwanda



Households with
access to electricity



Households with
access via the
national grid

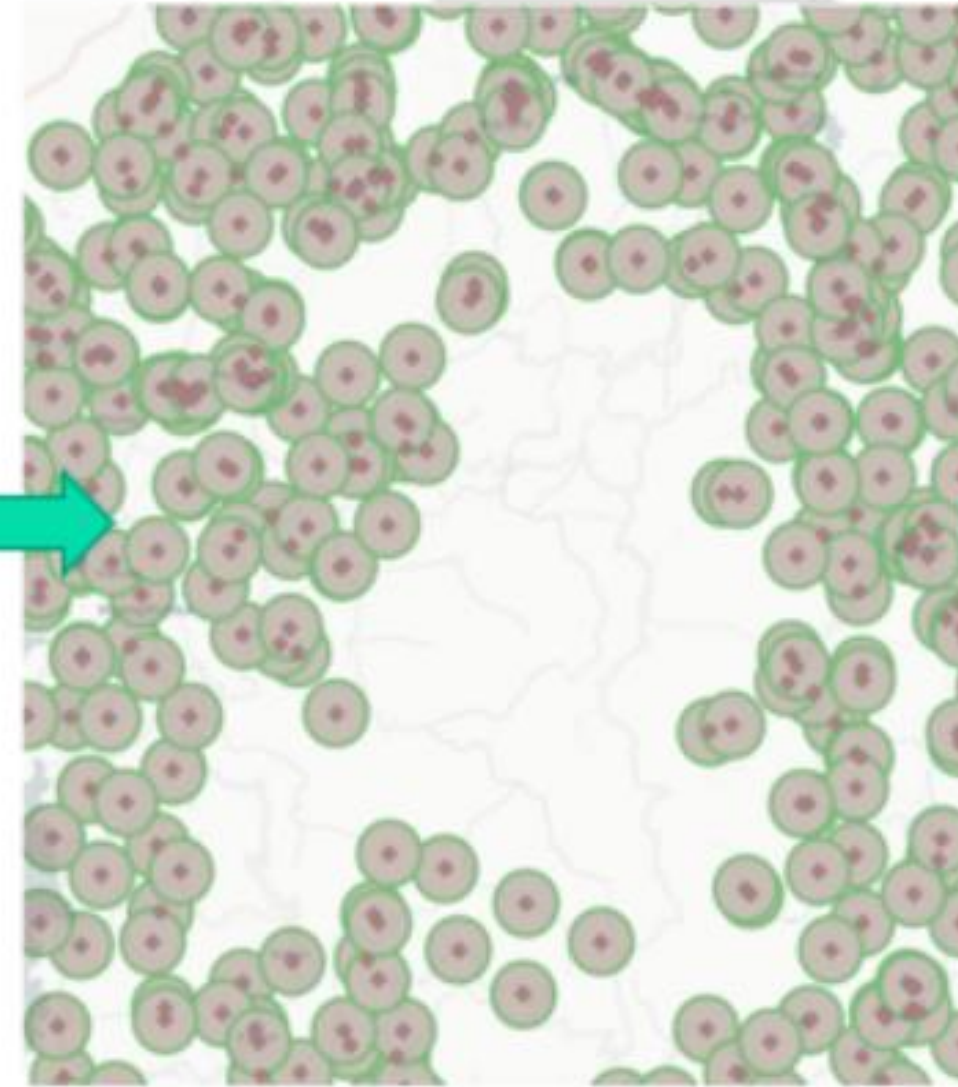
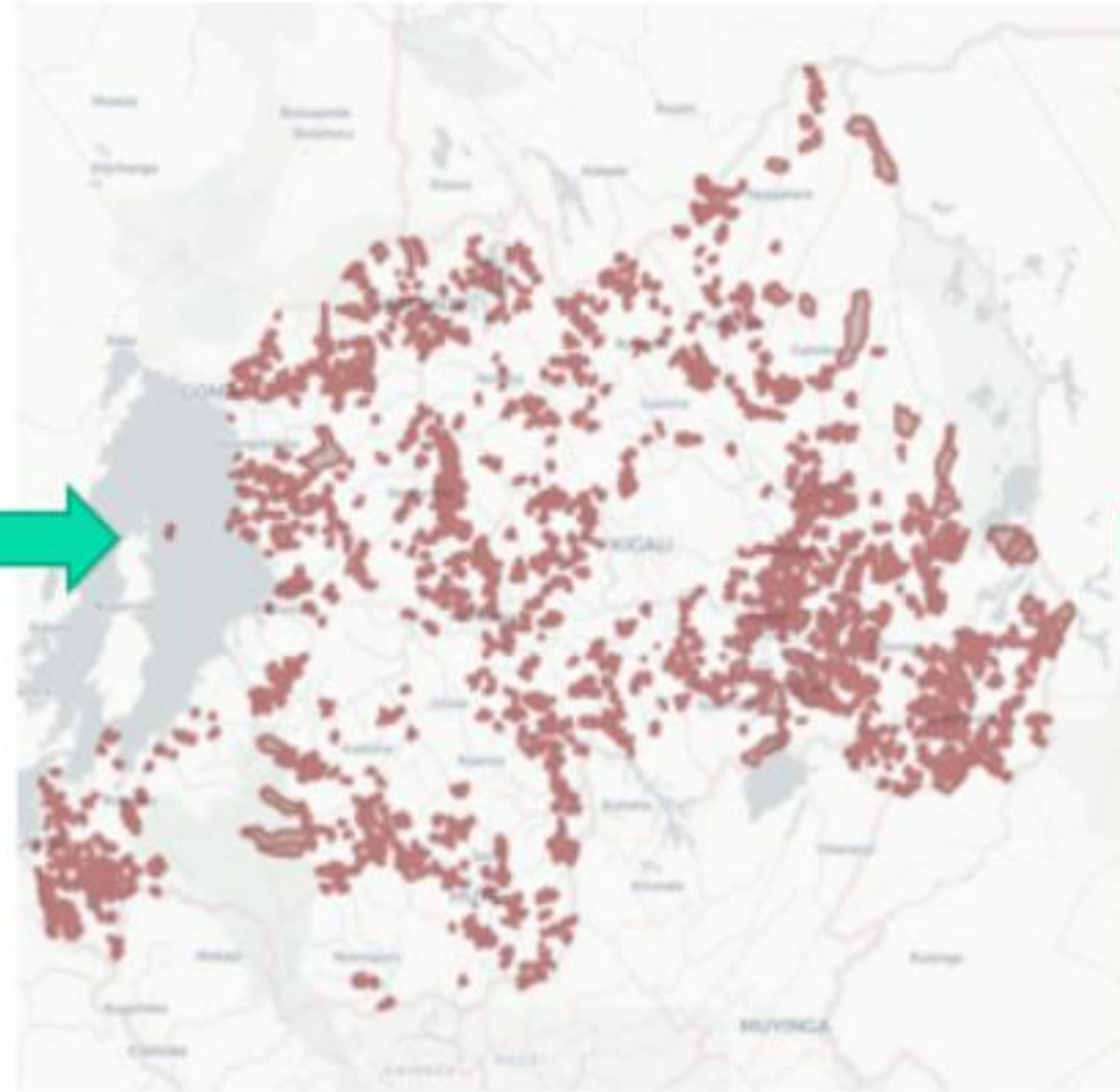
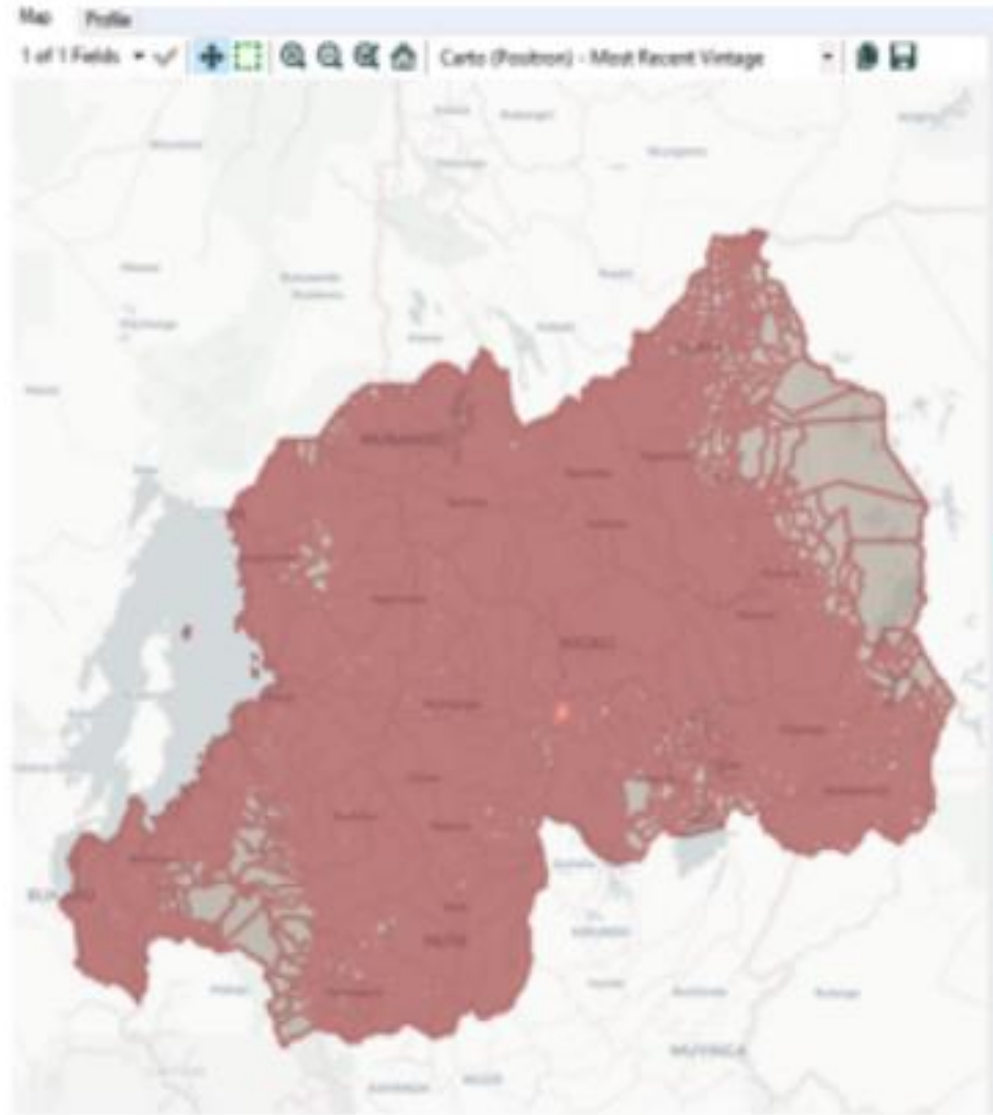


Households with
access via off-grid
systems



Target households set
by 2024, set by
Rwanda's national
electrification plan

Alteryx Decentralised Energy Project



name	SUM_Popula	SUM_Househ	Code_vill1	Area_KM
Rusororo	685	146	52070207	1.482529
Kabeza	648	145	52070304	1.437265
Isangano	716	212	52070403	1.768605
Nyakagarama	575	116	52080606	1.320456
Rwakabungo	684	280	52090204	3.989913
Gakiri	710	152	52090301	1.892094
Mushorerwa	567	146	52090502	2.809225
Nyabiyihura	547	125	52090704	1.370764
Iweryana	646	125	52090803	1.780358
Umunini	846	190	52090804	2.330342
Urumuri	1016	220	52100406	1.59332
Cyenjonjo I	420	79	52120101	6.34992
Nyendo	636	127	52120202	7.560881
Cyamunyana	1032	208	52130702	23.456371
Rubira	622	187	52130705	13.893594
Gatoma	571	122	52140101	2.248977
Kayarja	893	179	52140103	2.393794
Nyagatare	376	65	52140104	0.768079
Nvasine	376	65	52140105	2.222443

Every village name and polygon across Rwanda

Means of filtering this down to polygon areas **not** on the grid or already using alternative power

List of Infrastructure locations (schools, hospitals etc.) across Rwanda

+ any other numeric variables at a village level including: **population, households, high income count** etc.

Housing Energy Efficiency and Retrofit Potential

1

Overview

Our use case focuses on leveraging available **EPC** data, **Spatial** data and **Census** data for Hounslow to ask questions around energy performance of households such as potential to reach EPC-C and investment required to retrofit.

We'll then leverage Spatial information to create maps to identify areas to target for retrofit.

2

Business Issues

- Difficult to identify social rented properties that have no potential to reach EPC-C (2025 requirement).
- Difficult to identify **retrofit "Quick wins"**, which houses get a good return on investment?
- Struggling to **identify affordability** potential.

3

Outcomes & Value

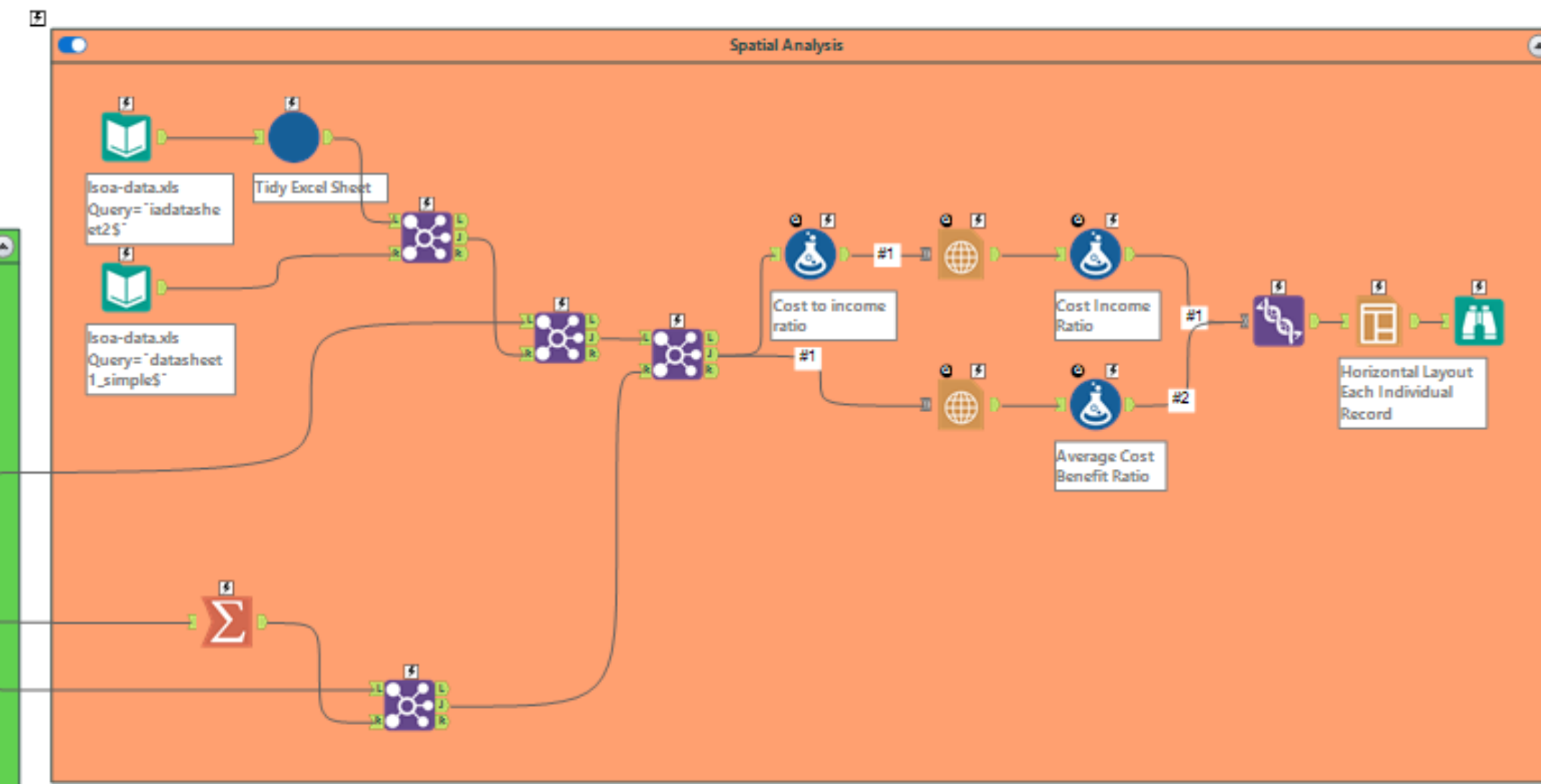
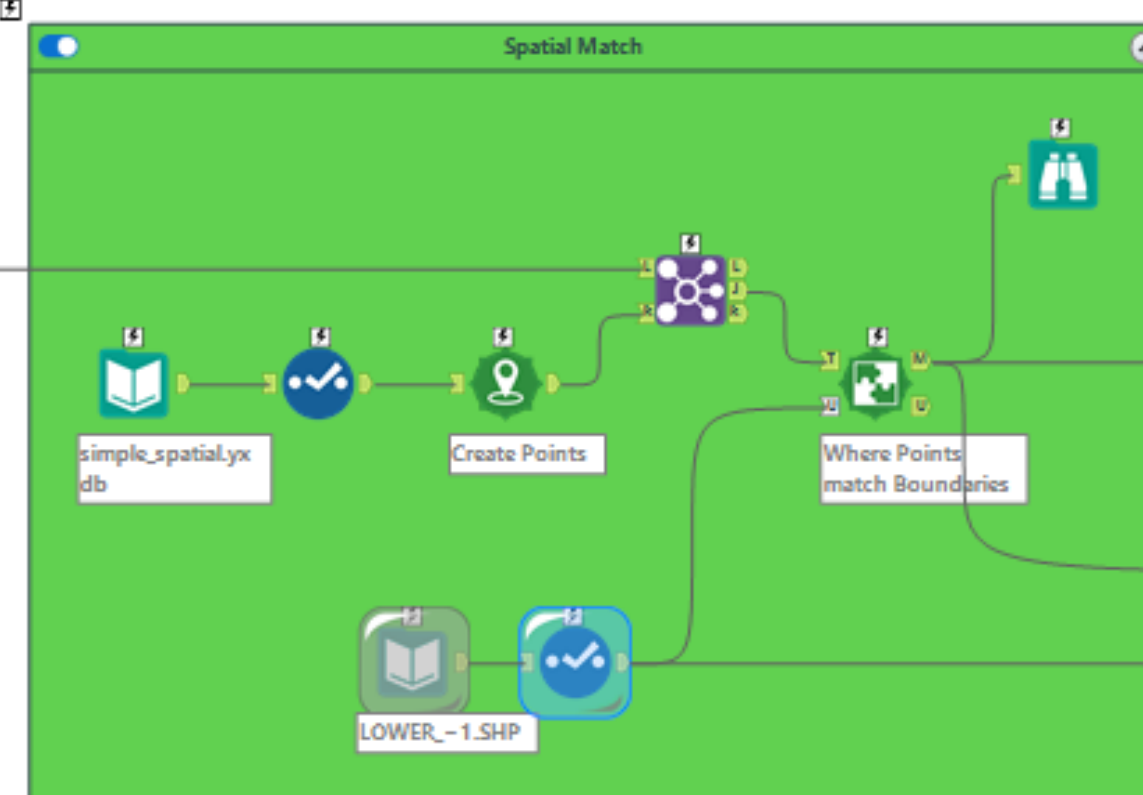
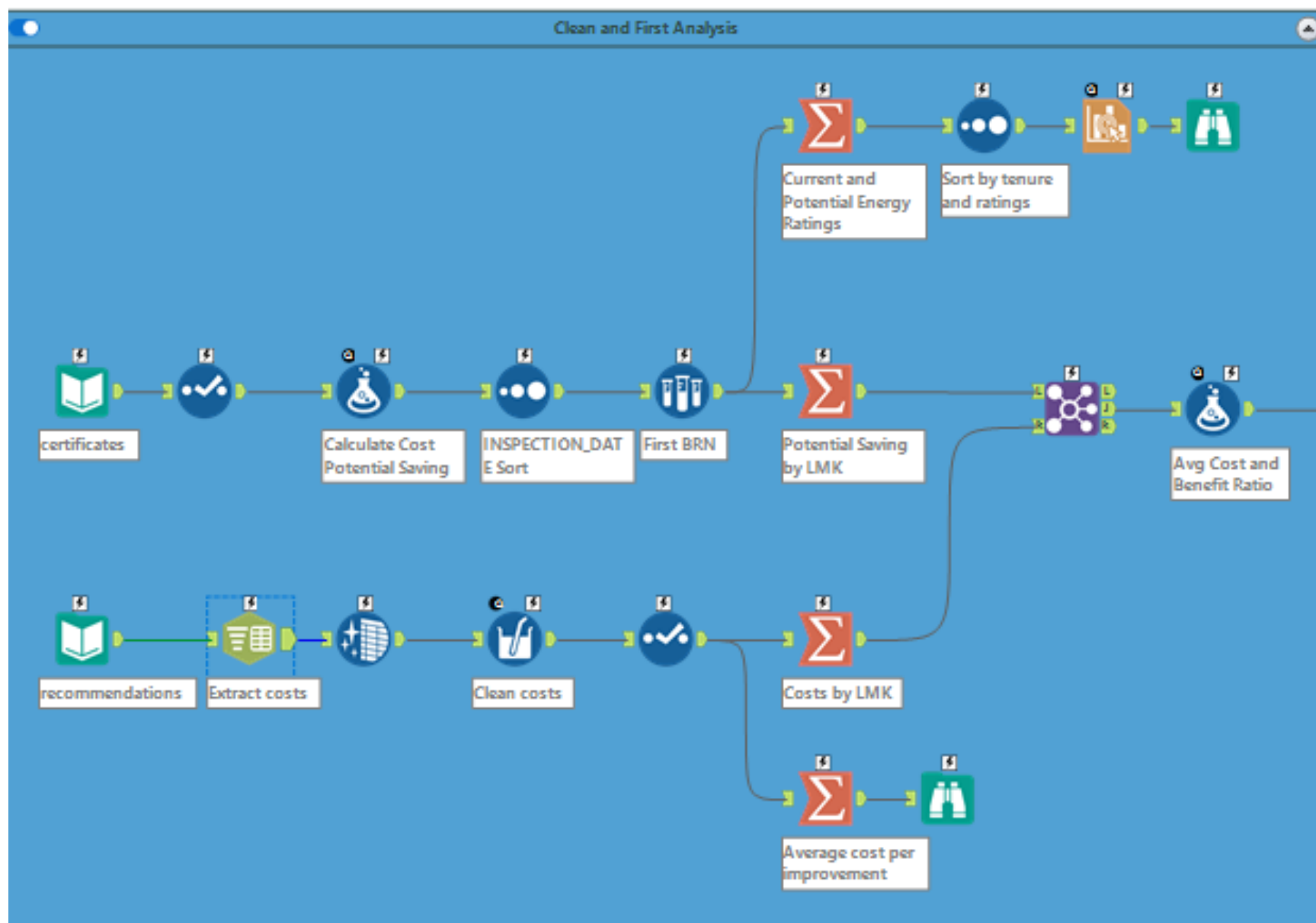
- Identify all current and potential energy ratings of all household types for **retrofit opportunities and compliance**.
- **Cost/Benefit** spatial map of Hounslow by census areas
- **Affordability** spatial map of Hounslow by census areas

The Alteryx Workflow

Import, Clean and Carry out Initial Analysis

Spatial Points, Boundaries and Joining

Join Census Data and Create Map Reports



Alteryx Automated Predictive Geospatial Analytics for Flood Mapping

For FEMA Emergency Response



Pain

- FEMA is tasked with generating the location intelligence that underlies the National Flood Insurance Program
- Historically, this is a very labor-intensive process; large data volumes, hundreds of data sets and thousands of data layers
- This includes the collection of information on over 90 Million structures across all 50 states and 6 US Territories
- Must create insight across different flood types and multiple geographic variables



Solution

- Alteryx blended and analyzed 300+ data sets with 4000 layers
- Geospatial and predictive analysis across multiple factors including different flood threats
- Reduced time to conduct new analysis and maps from years to weeks
- Provides significant and more timely information to state, regional and local governments, homeowners and insurance providers to mitigate risk

Automating Asset Inputs

Data Asset Mgmt.

Data Prep & Blending

Diagnostic Reporting

Business Insights

Location Insights

Predictive Analytics

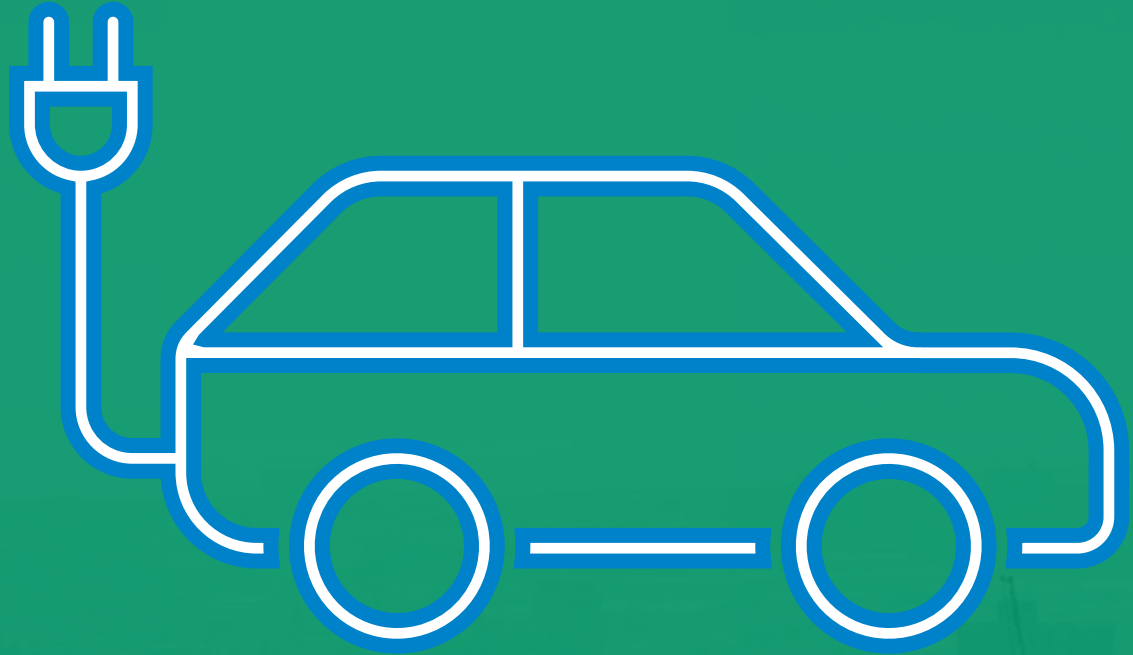
Data Science & ML

Forecasting & What-If Analysis

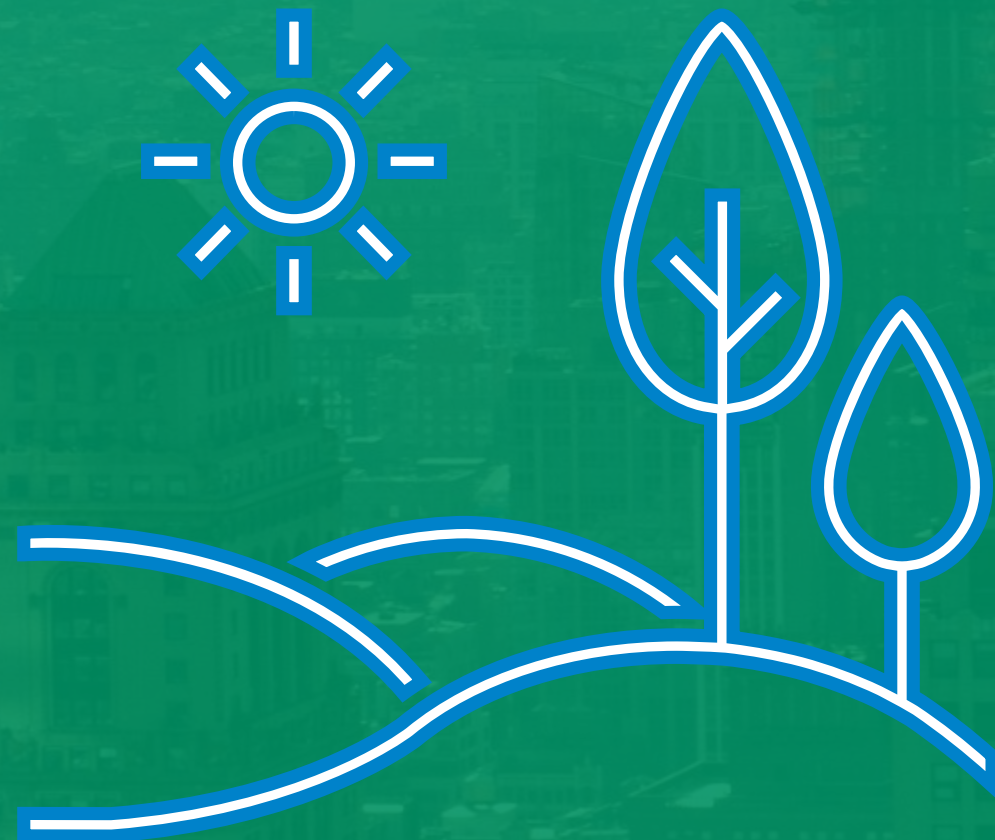
Deployment & Monitoring

Automating Outcomes

Other climate change use cases...



Low Carbon Transport
for Logistics



Atmospheric CO₂ Sampling
and Forecasting

Other climate change use cases...



Using Smart City
Analytics for Solid Waste
Management

How we engage...

1

Define use cases

2

Set up wider demo

3

Run pilot/PoC



THANK
YOU

alteryx

