



Hull
City Council

Data is the life blood and other
buzz words

Adam Jennison July 2020

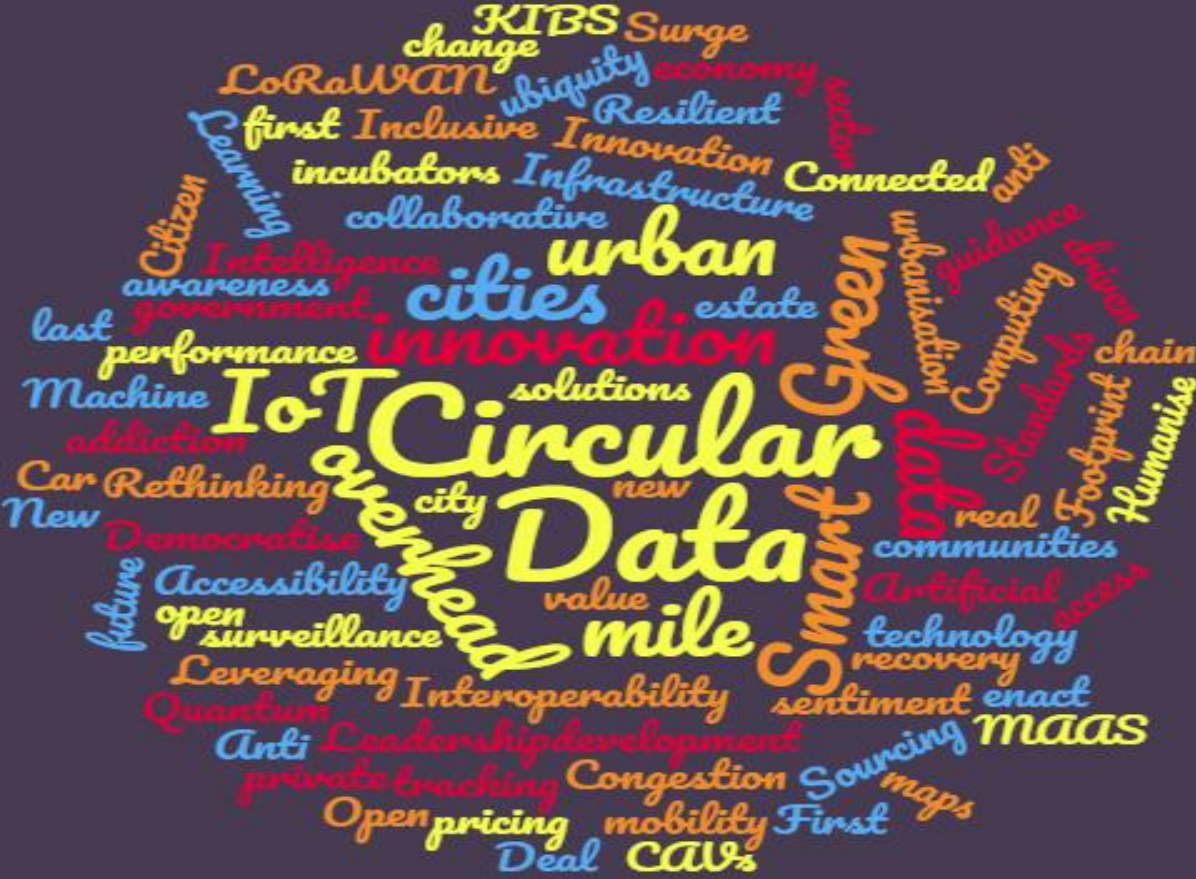
adam.jennison@hullcc.gov.uk



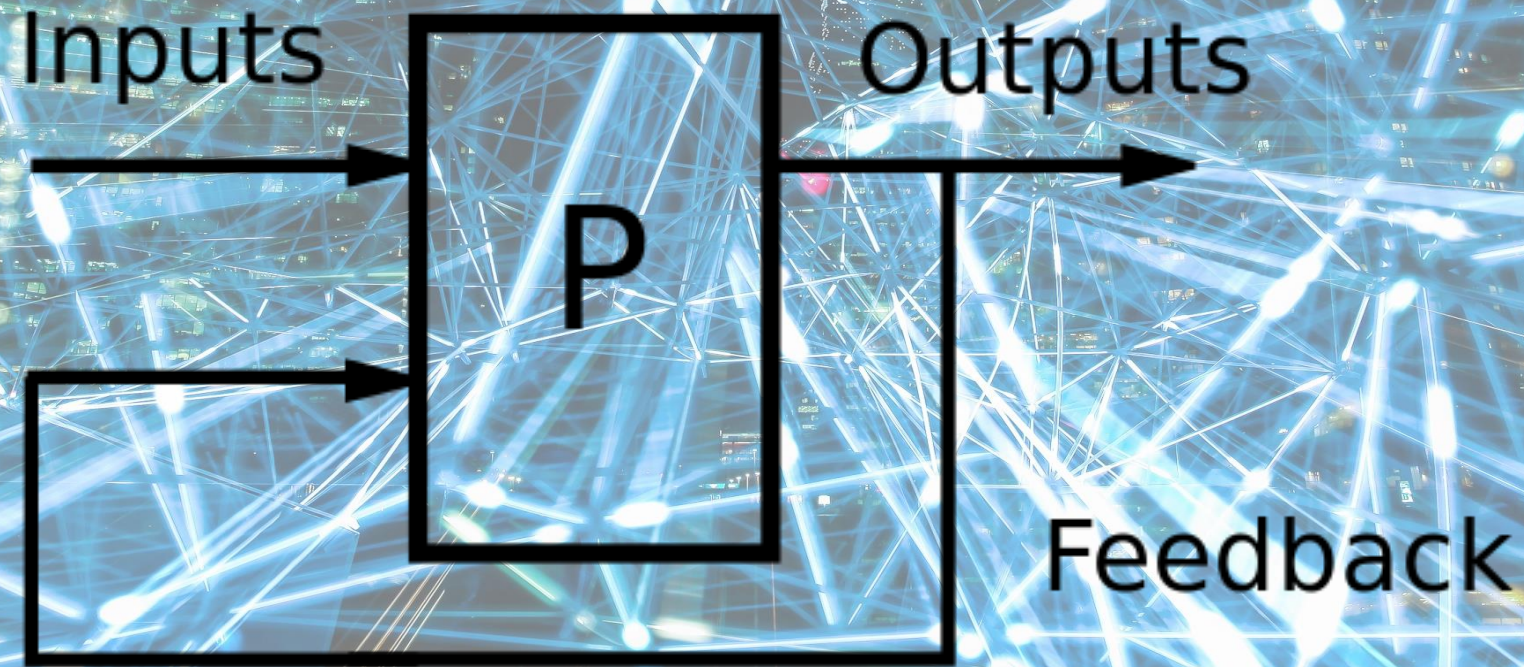
@adamjennison



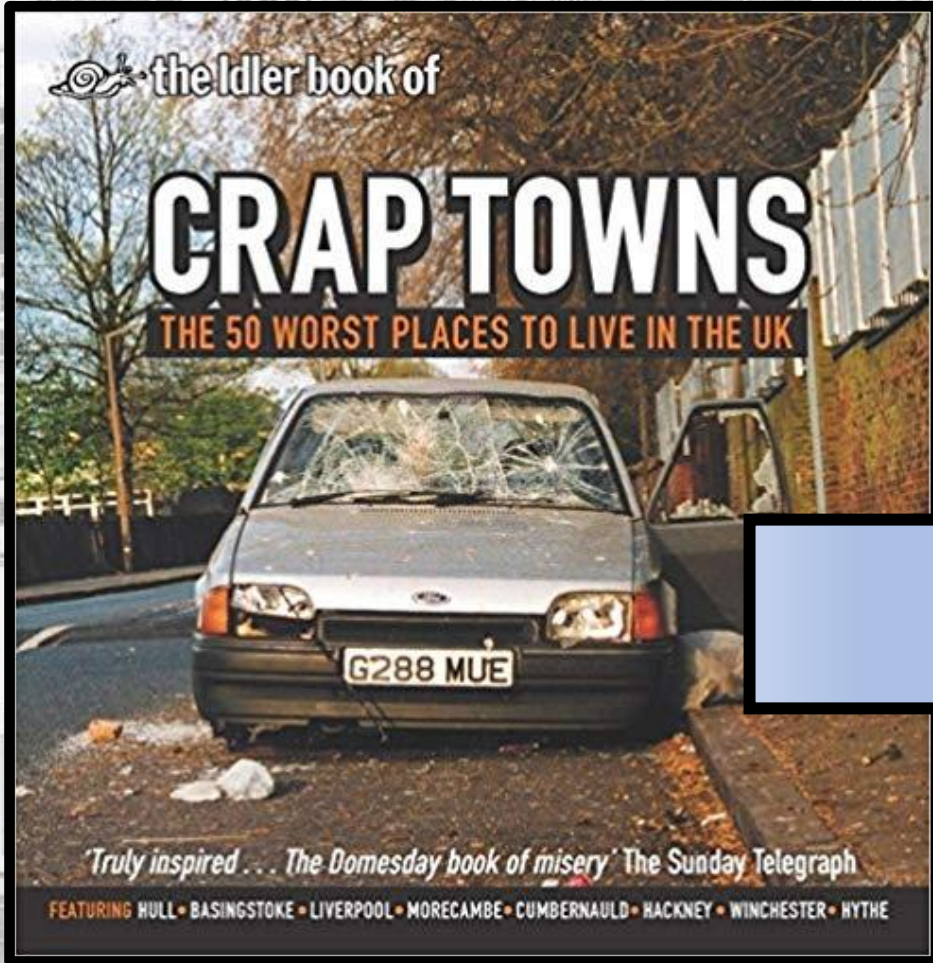
Buzzword Bingo



What is a Smart City?



Kingston-Upon-Hull



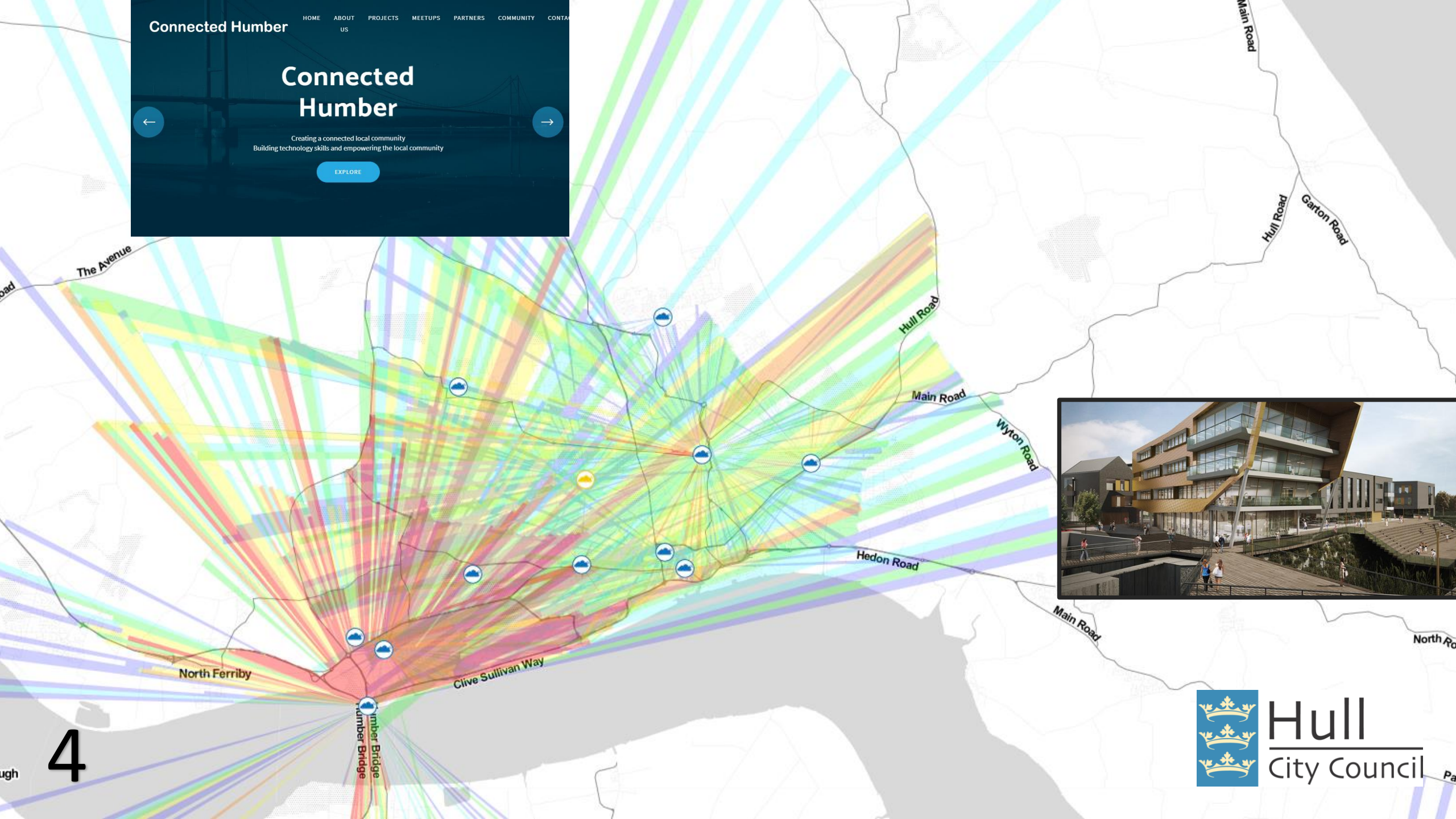
Connected Humber

HOME ABOUT US PROJECTS MEETUPS PARTNERS COMMUNITY CONTACT

Connected Humber

Creating a connected local community
Building technology skills and empowering the local community

EXPLORE



4

Full fibre - Hull shows the way

By Rory Cellan-Jones
Technology correspondent

10 October 2019

[f](#) [m](#) [t](#) [e](#) [Share](#)



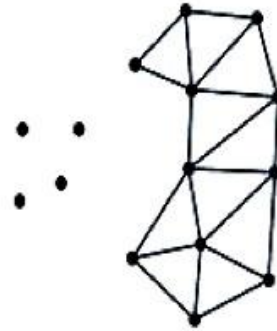
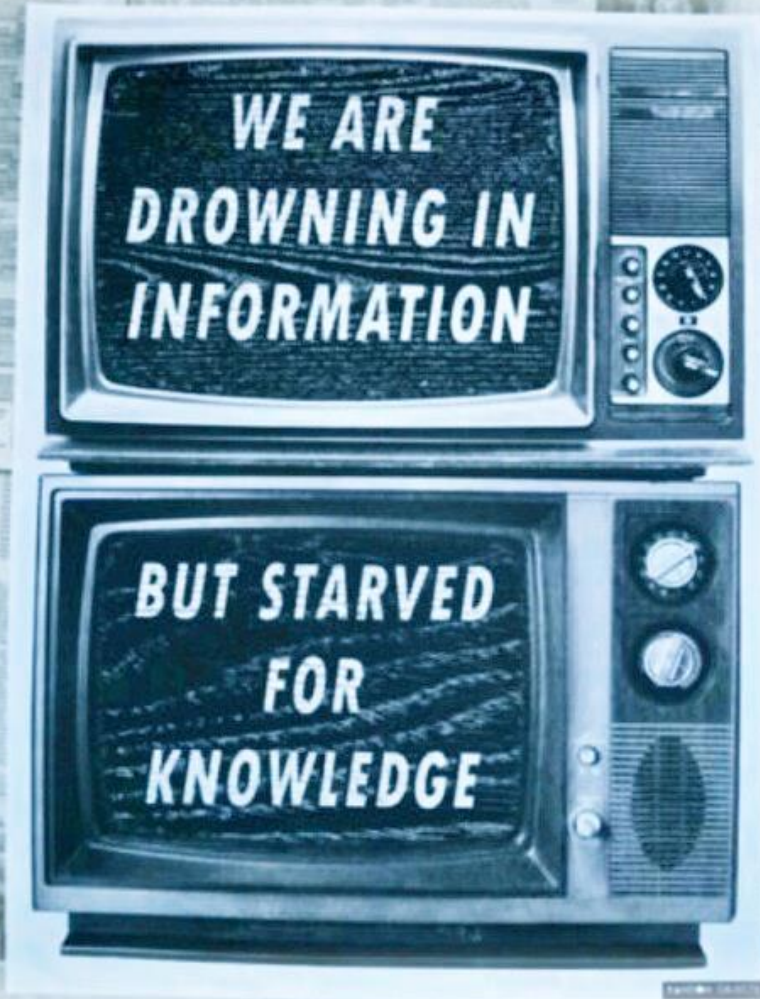
Hull has become the first city in the UK where everyone can get full fibre broadband.

This achievement has come after a seven-year investment programme - and the fact that this city has led the way in developing this vital technology tells us an interesting story about the UK's broadband strategy.

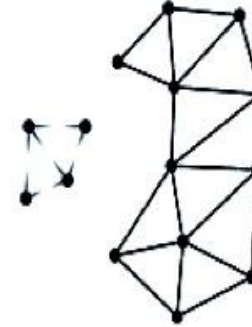
Full fibre, where a fibre optic cable comes right into your home rather than to a streetside cabinet, is the gold standard of broadband, available to only 8% of UK premises.

5

Knowledge. Wisdom. Learnings. Relevance. Depth.



Data



Information



Knowledge



Wisdom

6

<http://pinterest.com/pin/197870977350098245/>

http://en.wikipedia.org/wiki/DIKW_Pyramid



Hull
City Council

<https://www.flickr.com/photos/gleonhard/9835242005>

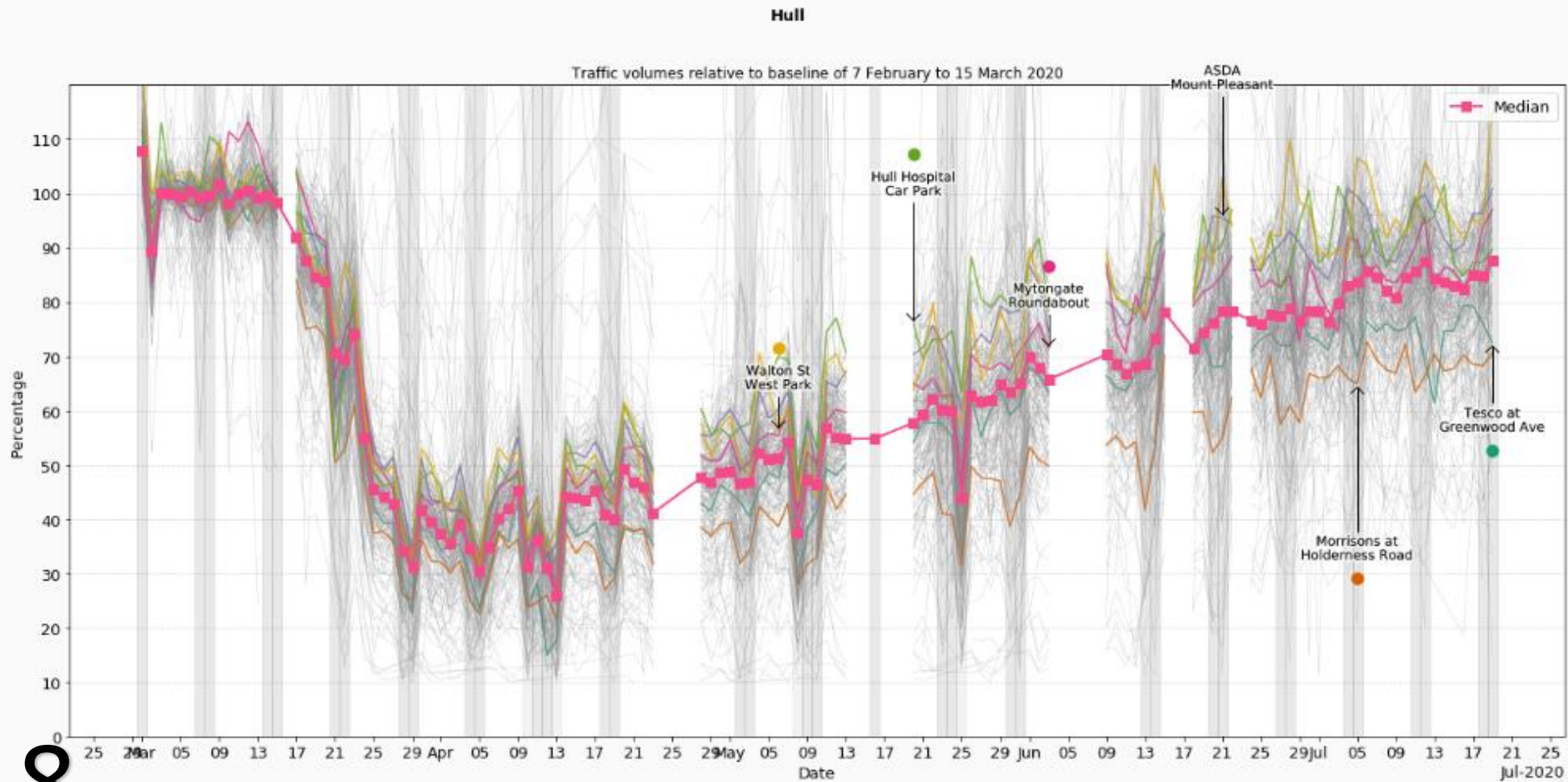


Hull

Statistics in Hull are obtained from inductive loops buried in the road surface, used as part of the SCOOT algorithm that coordinates sets of traffic signals. The underlying data should be at five minute intervals, and represents an average vehicle flow rather than absolute number. It is aggregated to 15 minute intervals first and small gaps of up to 30 minutes are filled with interpolation. The 15 minute interval should be sufficient to smooth out differences caused by traffic light cycles themselves.

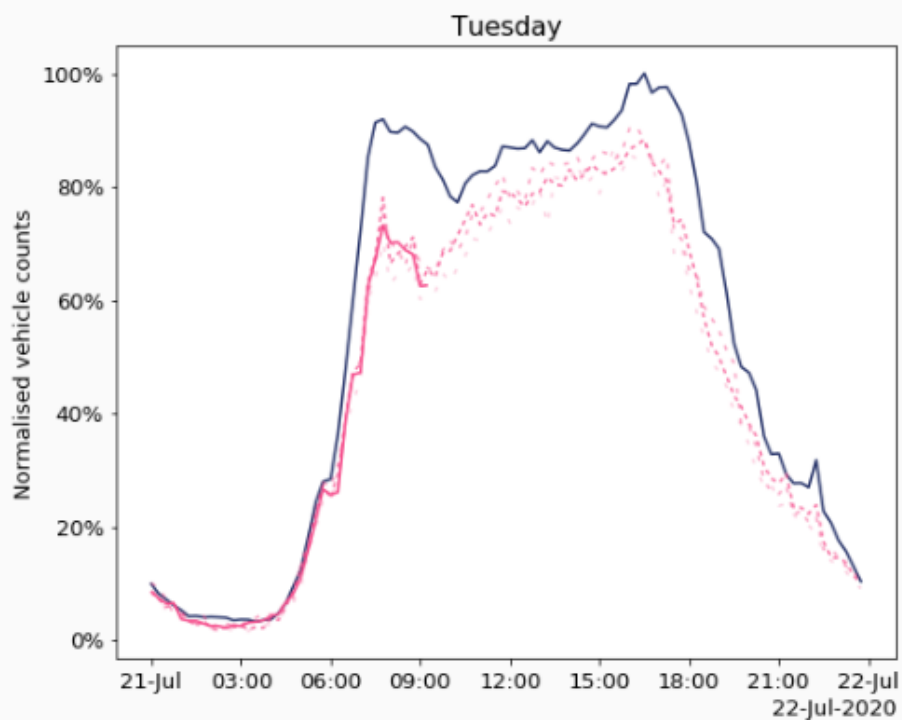
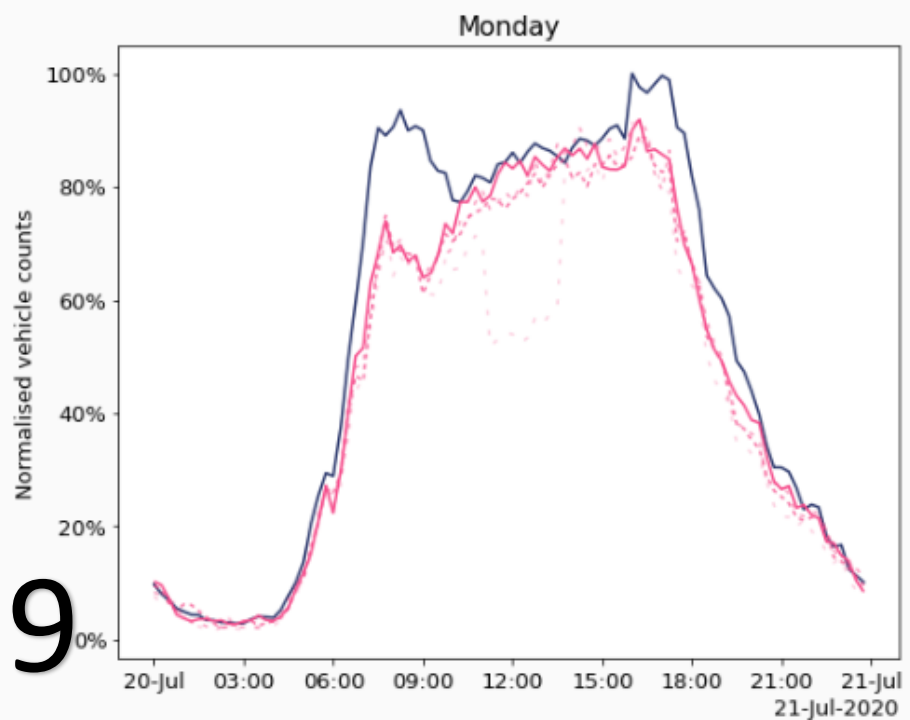
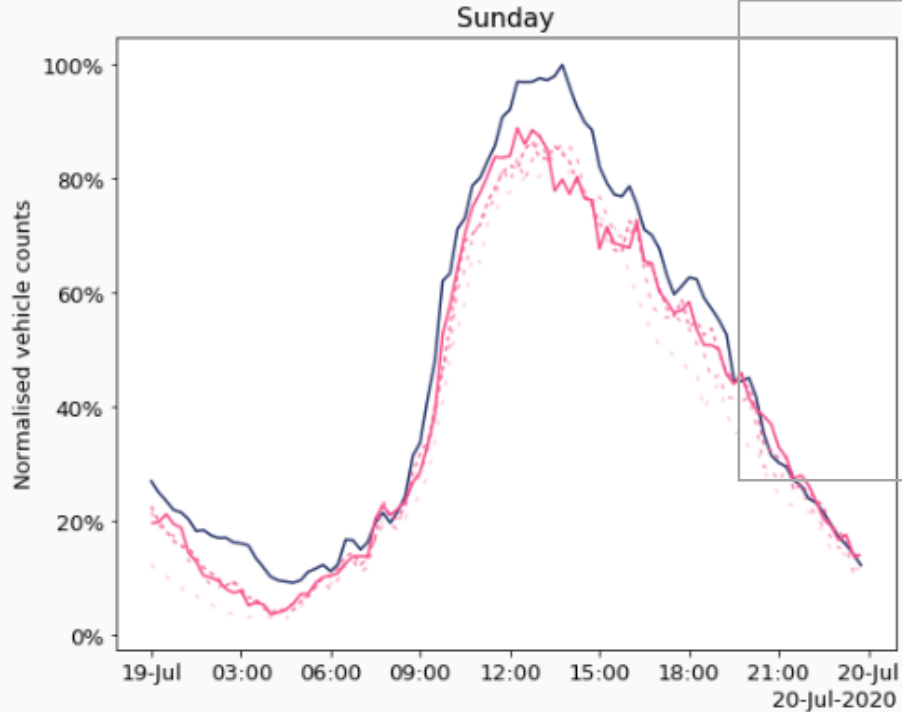
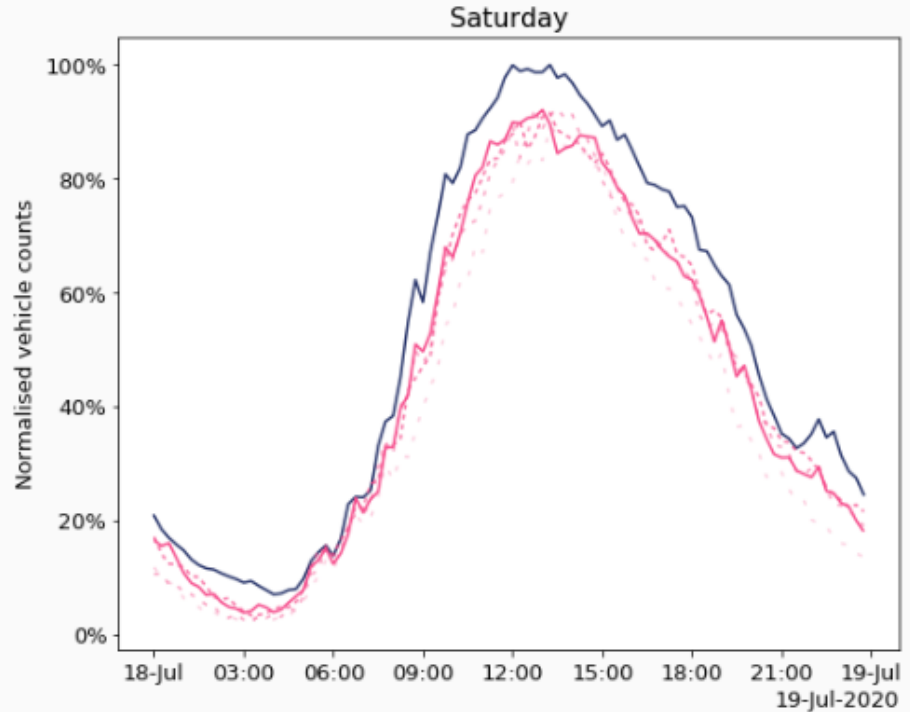
Data is provided by Hull City Council through their [open data portal](#). Thanks to Adam Jennison and his colleagues for helping to make this data available.

Last data obtained 20 July 2020 20:00



Data is the median across 245 monitoring points in Hull used in SCOOT traffic signal control. Each point is first considered individually relative to baseline data for that day of the week, calculated 7 Feb - 15 Mar. Thanks to Adam Jennison at Hull City Council for providing data. Luke Smith <luke.smith@ncl.ac.uk>



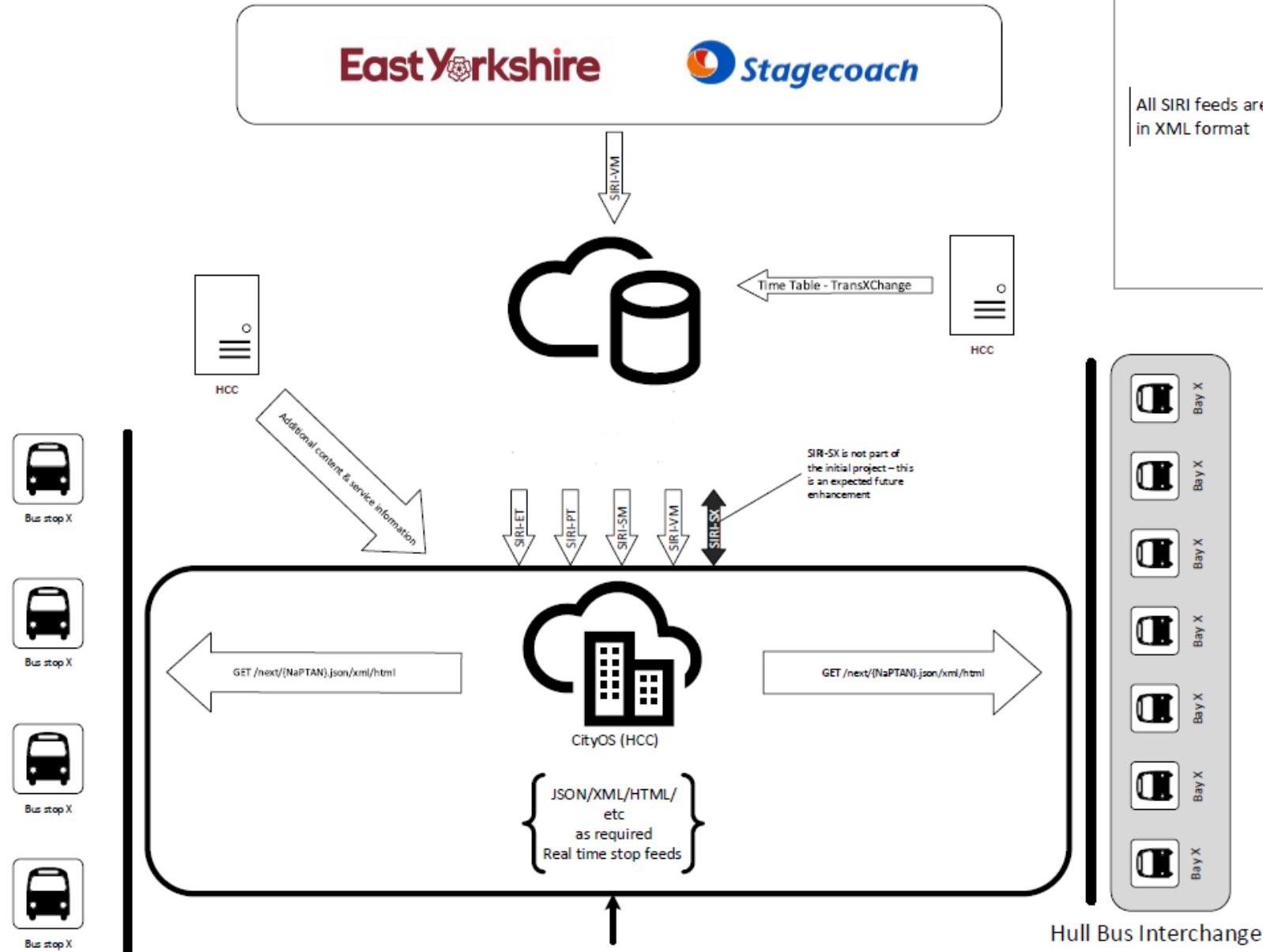


9

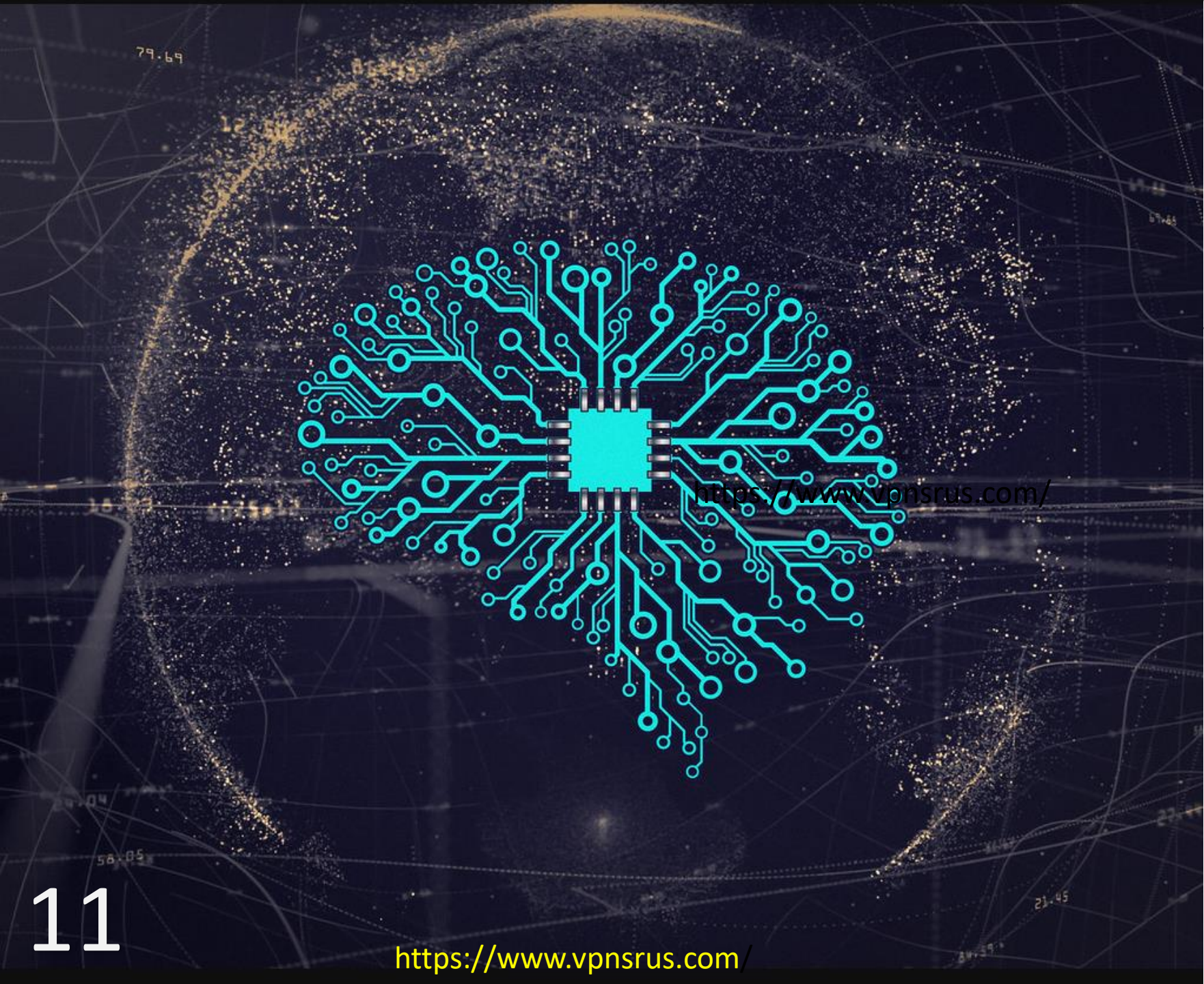


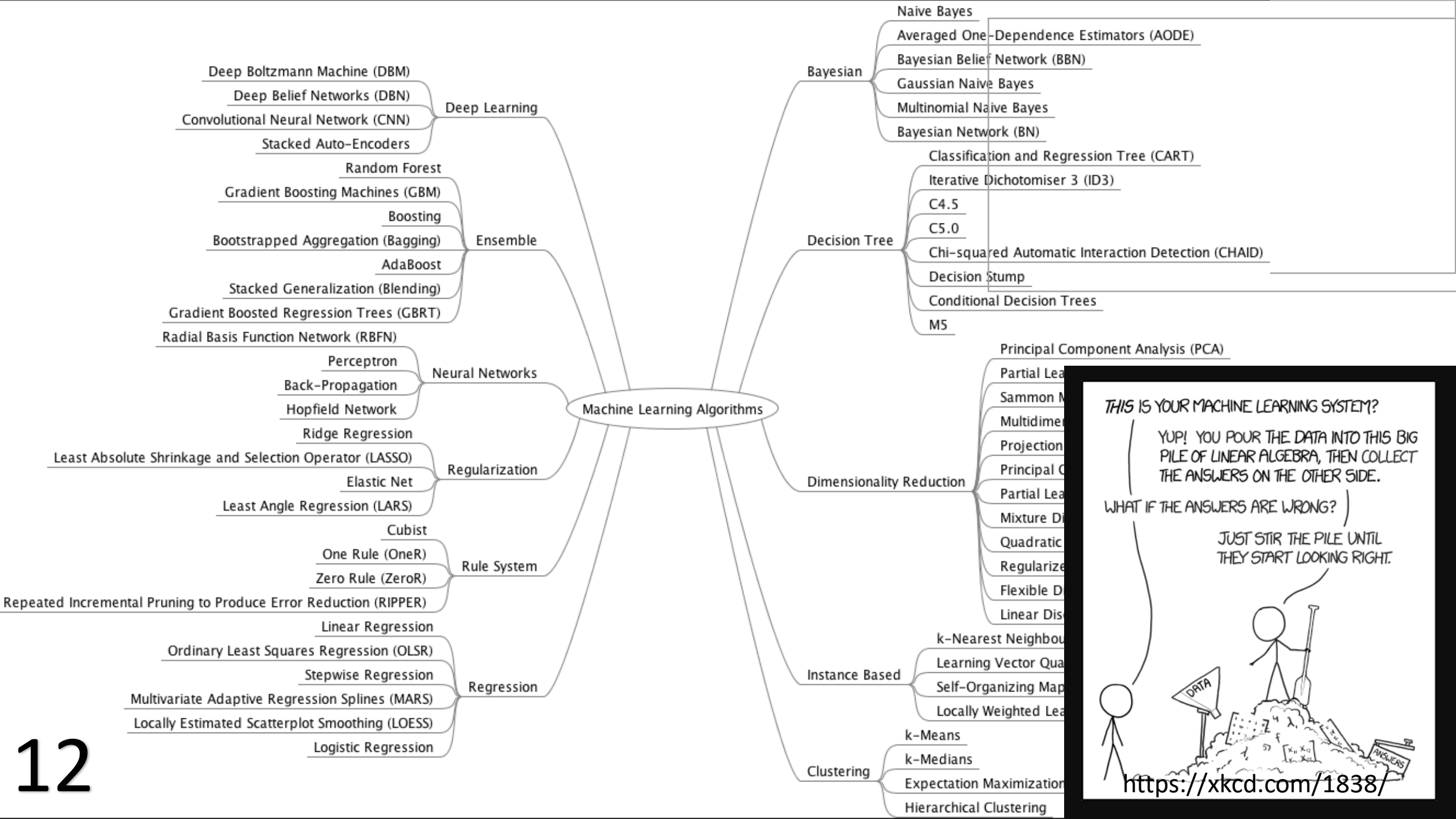
East Yorkshire Stagecoach

All SIRI feeds are in XML format



This rectangle represents the extent of these requirements





Thank you..



adam.jennison@hullcc.gov.uk



@adamjennison

BHS: <https://nickcouplandillustration.bigcartel.com>



FORMER CO-OP BUILDING, HULL

